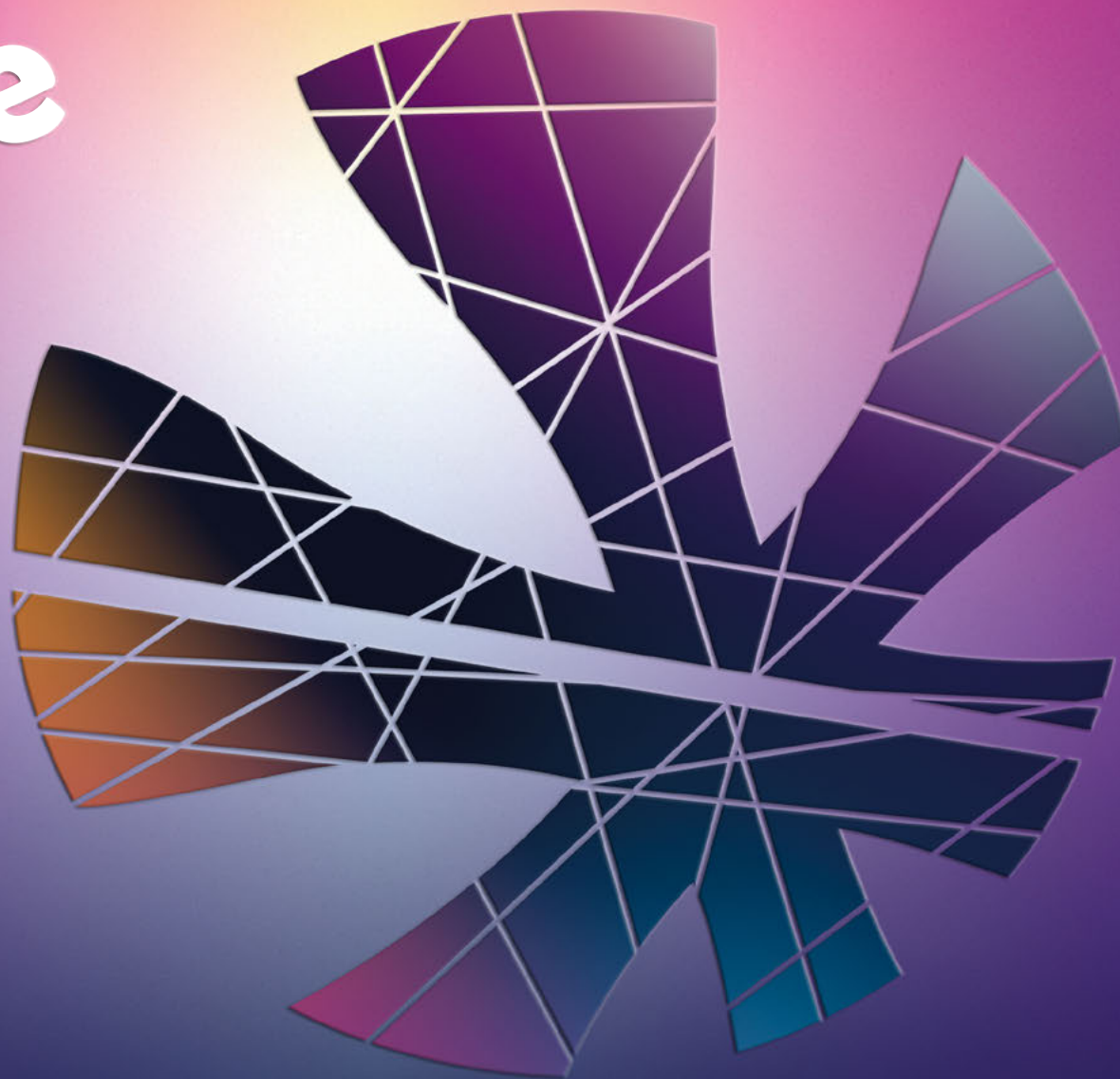




2023 CATALOGUE





ABOUT REECE

ABOUT REECE

MATCH CLOTHING

MATCH CLOTHING

TOPS & PANTS

TOPS & PANTS

SWEAT COLLECTION

SWEAT COLLECTION

RACKET CLUB COLLECTION

RACKET CLUB

SPORTS EQUIPMENT

SPORTS EQUIPMENT

INFORMATION

INFORMATION

About Reece

Reece designs and markets attractive clothing and accessories for active lifestyles. With dynamic and versatile collections we aim to motivate you to get the best out of yourself. Whether you play just for fun or on the highest level.

Reece is the proud clothing partner of international sports federations, European top teams and individual players with unique qualities. Even up to Olympic level! Beautiful partnerships arise from the shared philosophy of passion for sports and always striving for the highest achievable goals.

MISSION - WHAT WE STAND FOR

To make you perform at your best.

VISION - WHAT WE AIM FOR

To bring the best performance into active lifestyles.

VALUES - WHAT WE BELIEVE IN

Passionate about sports.

Focus on quality and design.

Performance and presence.



On the road to a circular sports brand

For centuries, our economy has been based on a linear production model. Products are made from various raw materials that are thrown away after use. But our raw materials are limited, which makes this production process unsustainable. Reece is part of a family company, so creating a better world for generations that will come after us has our focus. That is why we are dedicated to speed up the transition to a circular economy and reduce our carbon footprint.

MWY+

We gather all our sustainable projects under the label MWY+ (Me With You+). This allows us to make it easier for customers and partners to make a sustainable choice.

This label also includes our Reecycled collection, made from completely recycled PET bottles. This collection is the result of a unique collaboration between Reece and Waste2Wear. The Reecycled collection includes a shirt (Rise) and two polos (Sheila and Elliot) and is available in many colours!

About recycled polyester

Recycled polyester comes from polyester PET bottles, rejected B-grade fabrics and residual materials. Using existing materials reduces the demand for raw materials by 65%.

Recycled polyester is just as good as ordinary polyester. It is strong, retains its shape and strength, resists abrasion and wrinkles and dries quickly. In other words: excellent material for the manufacture of sportswear.

Cooperation with Salvation Army ReShare

We go further than the production of recycled collections. We also want to take care of used clothing. Therefore, together with our partner Salvation Army Reshare, we offer a recycling and return service for our Reece clubs.

All the players, staff, employees, and supporters can put their used clothing in a textile container that we provide. The gathered clothing will be given away by the Salvation Army to those in need or will be sold.



"We will only get the textile industry clean if we produce more demand-driven and more locally."

Another necessity is to use recycled and sustainably produced raw materials!"

- Director Olaf Pothoven -





 **Reece**


DHB
Deutscher
Hockey-Bund e.V.

© WSP / Rodrigo Jaramillo



© WSP / Rodrigo Jaramillo

Special Design



ABOUT REECE

Does your club have a milestone or celebration coming up that calls for a special outfit? Do the club's articles of association place specific requirements on sports clothing? Or is your team just eager to turn out in a kit worn by no one else?

Then Special Design is the solution for you. Our Special Design items have the qualities you can expect of a leading teamwear brand: superb functionality for the best possible performance and a perfect fit.



More information and conditions at:

reeceaustralia.com/uk/about-reece-australia/special-design

✉ sd@deventrade.com - ☎ 01332 378966

A studio photograph featuring four models showcasing soccer match clothing. On the left, a female model stands in a blue short-sleeved jersey with white side panels, a white skirt, blue knee-high socks, and orange cleats. In the center, a male model is in a crouched starting position, wearing a blue short-sleeved jersey with a white logo on the chest, white shorts, blue socks, and black and yellow cleats. On the right, another male model stands in a blue short-sleeved jersey, white shorts, blue socks, and black and yellow cleats. Next to him, a female model stands in a blue short-sleeved jersey with white side panels, a white skirt, blue socks, and black and yellow cleats. The background is a minimalist studio with light blue and white geometric panels. A green banner with the text 'MATCH CLOTHING' is positioned over the models on the right.

MATCH CLOTHING

RISE SHIRT LADIES

95% RECYCLED POLYESTER, 5% ELASTANE

STYLE NUMBER
810606

SIZES: 128 - 140 - 152 - XS - S - M - L - XL - XXL

JR £ **29,75**

SR £ **34,99**



The Rise Shirt Ladies is an modern and classic sports shirt in one. The shirt consists of 95% recycled polyester and 5% elastane. It fits well and feels good. It is the details that make the shirt so comfortable and flattering. This shirt has a feminine fit. The ClimaTec finish keeps your skin dry. The raglan sleeve insert ensures optimal freedom of movement. The sides are mesh for optimal ventilation. The shirt features printed logos.



White
810606 - 2000



Orange
810606 - 3000



Knockout Pink
810606 - 3888



Royal
810606 - 5000



Red
810606 - 6000



Navy
810606 - 7000



Black
810606 - 8000

RISE SHIRT

95% RECYCLED POLYESTER, 5% ELASTANE

STYLE NUMBER
810003

SIZES: 128 - 140 - 152 - 164 - S - M - L - XL - XXL - XXXL

JR £ **29,75**

SR £ **34,99**

The Rise Shirt is a very modern and classic sports shirt in one. The shirt consists of 95% recycled polyester and 5% elastane. It fits well and feels good. The Rise Shirt has a tight fit. The ClimaTec finish keeps your skin dry. The raglan sleeve insert ensures optimal freedom of movement. The sides are mesh for optimal ventilation. The shirt features printed logos.



White
810003 - 2000



Orange
810003 - 3000



Royal
810003 - 5000



Red
810003 - 6000



Navy
810003 - 7000



Black
810003 - 8000

SHEILA POLO LADIES

100% RECYCLED POLYESTER

STYLE NUMBER

863601

SIZES: 128 - 140 - 152 - XS - S - M - L - XL - XXL

JR £ **29,75**

SR £ **34,99**



This airy polo shirt is made of 100% recycled material. The Sheila Polo has a feminine, fitted fit and has a ClimaTec finish, which keeps your skin dry. The breathable material is lightweight and dries quickly. The polo, with a small slit in the side and a slightly longer back, has a feminine neckline with polo collar. The logo is printed on the left sleeve.



Bottle Green
863601 - 1020



White
863601 - 2000



Orange
863601 - 3000



Yellow
863601 - 4000



Royal
863601 - 5000



Sky Blue
863601 - 5210



Red
863601 - 6000



Burgundy
863601 - 6690



Navy
863601 - 7000



Black
863601 - 8000

ELLIOT POLO

100% RECYCLED POLYESTER

STYLE NUMBER
863000

SIZES: 128 - 140 - 152 - 164 - S - M - L - XL - XXL - XXXL

JR £ **29,75**

SR £ **34,99**



This airy polo shirt is made of 100% recycled material. The Elliot Polo features a ClimaTec finish that keeps your skin dry. The breathable material is lightweight and dries quickly. The polo, with a small slit in the side and a slightly longer back, has three buttons in the neck. The logo is printed on the left sleeve.



Bottle Green
863000 - 1020



White
863000 - 2000



Orange
863000 - 3000



Yellow
863000 - 4000



Royal
863000 - 5000



Sky Blue
863000 - 5210



Red
863000 - 6000



Burgundy
863000 - 6690



Navy
863000 - 7000



Black
863000 - 8000

CORE SHIRT LADIES

92% POLYESTER, 8% ELASTANE

STYLE NUMBER

810601

SIZES: 128 - 140 - 152 - XS - S - M - L - XL - XXL

JR £ **25,50**

SR £ **29,99**



The Core Shirt is a classic item from the collection of Reece. A basic sports shirt, with various details that make it very comfortable and flattering. The shirt (made of 92% polyester and 8% elastane) has a feminine fit. It contains a ClimaTec finish that transports sweat optimally. The raglan sleeve insert prevents the shirt from irritating under the arms and allows a natural range of motion. The collar with mesh inserts gives the shirt a fashionable feel. The shoulders and sides also contain mesh for optimal ventilation. The shirt features a printed logo on the chest and on the back.



White
810601 - 2000



Orange
810601 - 3000



Bright Royal
810601 - 5160



Bright Red
810601 - 6710



Navy
810601 - 7000



Black
810601 - 8000

Available to end of stock **2023**

CORE SHIRT UNISEX

92% POLYESTER, 8% ELASTANE

STYLE NUMBER
810201

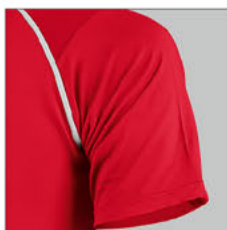
SIZES: 128 - 140 - 152 - 164 - S - M - L - XL - XXL - XXXL

JR £ **25,50**

SR £ **29,99**



The Core Shirt is a classic item from the collection of Reece. A basic sports shirt, with various details that make it very comfortable and flattering. The shirt (made of 92% polyester and 8% elastane) has a feminine fit. It contains a ClimaTec finish that transports sweat optimally. The raglan sleeve insert prevents the shirt from irritating under the arms and allow natural range of motion. The collar with mesh inserts gives the shirt a fashionable feel. The shoulders and sides also contain mesh for optimal ventilation. The shirt features a printed logo on the chest and on the back.



White
810201 - 2000



Orange
810201 - 3000



Bright Royal
810201 - 5160



Bright Red
810201 - 6710



Navy
810201 - 7000



Black
810201 - 8000

Available to end of stock 2023

ISA CLIMATEC POLO LADIES

100% POLYESTER

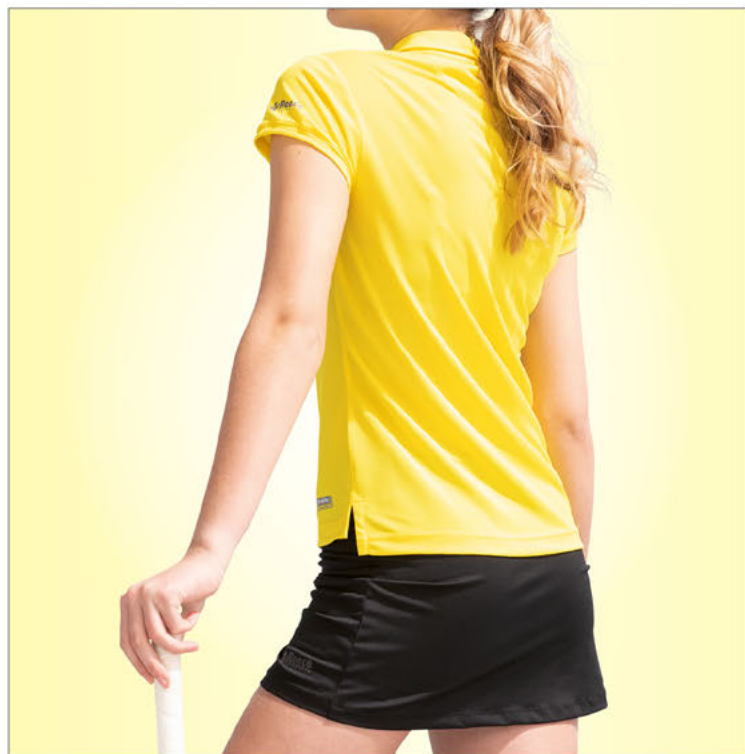
STYLE NUMBER
863107

SIZES: 128 - 140 - 152 - XS - S - M - L - XL - XXL

JR £ **25,50**

SR £ **29,99**

This lightweight polo shirt is a favourite for various sports and has a feminine, tailored fit. The polo features a Climatec finish that transports sweat optimally and the breathable material dries quickly. The polo shirt comes with a small split in the side and a slightly longer back. It has a feminine neckline with a polo collar. The logo is printed on the left sleeve.



Bottle Green
863107 - 1020



Orange
863107 - 3000



Sun Yellow
863107 - 4020



Sky Blue
863107 - 5210



Bright Red
863107 - 6710



Navy
863107 - 7000

DARWIN CLIMATEC POLO UNISEX

100% POLYESTER

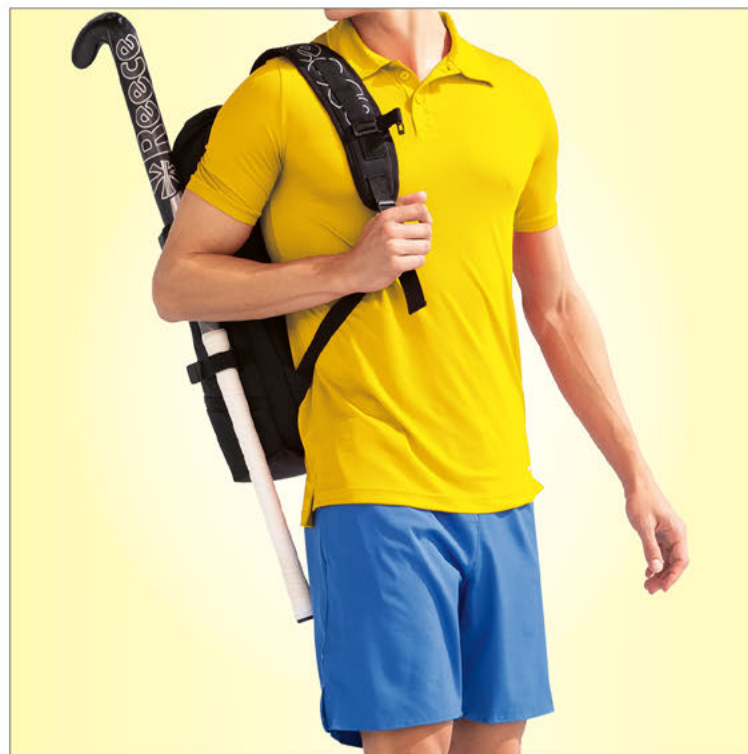
STYLE NUMBER
863106

SIZES: 128 - 140 - 152 - 164 - S - M - L - XL - XXL - XXXL

JR £ **25,50**

SR £ **29,99**

This lightweight polo shirt is a favourite for various sports and features a ClimaTec finish that transports sweat optimally. The breathable material dries quickly. The polo shirt has a small split in the side and a slightly longer back. It features a collar with three buttons. The logo is printed on the left sleeve.



Bottle Green
863106 - 1020



Sun Yellow
863106 - 4020



Bright Royal
863106 - 5160



Sky Blue
863106 - 5210



Burgundy
863106 - 6690



Bright Red
863106 - 6710



Navy
863106 - 7000



Black
863106 - 8000

Available to end of stock.

MATCH CLOTHING

REACTION LIMITED SHIRT LADIES

100% POLYESTER

STYLE NUMBER
810607

SIZES: 128 - 140 - 152 - XS - S - M - L - XL

JR £ 23,99 SR £ 27,99



This comfortable sports shirt with stretch has a ladies fit and stands out because of the sublimated graphic print. The mesh at the back provides ventilation, and the ClimaTec finish ensures optimal sweat-wicking so that you stay dry during your training. Mix & match this shirt with other items from the limited package for a total look.



Multi Colour
810607 - 1234



Diva Pink
810607 - 6630



SMITHFIELD SHIRT LIMITED UNISEX

100% POLYESTER

STYLE NUMBER
810002

SIZES: 128 - 140 - 152 - 164 - S - M - L

JR £ 23,99 SR £ 27,99



This Smithfield Limited sports shirt (regular fit) contains an all-over graphic print. Mix and Match this shirt with other items from the limited Package. The material is equipped with a ClimaTec finish, for optimal sweat transport. The raglan sleeve insert increases the wearing comfort and gives a pleasant freedom of movement.



Navy
810002 - 7000



REACTION LIMITED SHIRT

100% POLYESTER

STYLE NUMBER
810004

SIZES: 128 - 140 - 152 - 164 - S - M - L - XL - 2XL

JR £ **23,99**

SR £ **27,99**



This comfortable sports shirt with stretch has a round neck and a regular fit. The shirt has a ClimaTec finish for optimal sweat removal. The mesh material at the back gives ventilation. The sublimated graphic print completes this shirt. You can mix & match the shirt with the other items from the limited package for a complete look.



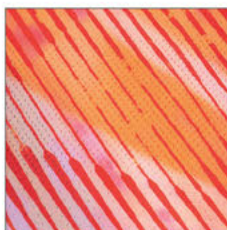
Dark Green
810004 - 1110



Orange - Red - Royal
810004 - 3650



Blue
810004 - 5555



FUNDAMENTAL SKORT LADIES

92% POLYAMIDE, 8% ELASTANE

STYLE NUMBER
839101

SIZES: 116 - 128 - 140 - 152 - XS - S - M - L - XL - XXL

JR £ **25,50**

SR £ **29,99**



The Reece Fundamental Skort is indispensable in the wardrobe of hockey and tennis fans. The breathable material is lightweight and dries quickly. The ClimaTec finish guarantees optimal moisture transport. The skort includes an integrated inner short for optimum comfort. The added elastan gives the fabric a soft feel. The skort contains flat seams to avoid skin irritation.



Green
839101 - 1000



Bottle Green
839101 - 1020



Mint
839101 - 1160



White
839101 - 2000



Orange
839101 - 3000



Knockout Pink
839101 - 3888



Bright Royal
839101 - 5160



Neon Pink
839101 - 6006



Coral
839101 - 6620



Burgundy
839101 - 6690



Bright Red
839101 - 6710



Navy
839101 - 7000



Black
839101 - 8000



Sport Grey
839101 - 9180

Available to end of stock 2024

LEGACY SHORT UNISEX

100% POLYESTER

STYLE NUMBER
837101

SIZES: 116 - 128 - 140 - 152 - 164 - S - M - L - XL - XXL

JR £ **25,50**

SR £ **29,99**



This multifunctional short is ultimately comfortable! With mesh insert on the back for extra ventilation. The two side pockets (big enough for tennis balls) contain zips. Furthermore, the shorts have a waistband with drawcord.



Bottle Green
837101 - 1020



White
837101 - 2000



Bright Royal
837101 - 5160



Burgundy
837101 - 6690



Bright Red
837101 - 6710



Navy
837101 - 7000



Black
837101 - 8000



Sport Grey
837101 - 9180

Available to end of stock 2024

SYDNEY KEEPER SHIRT LONG SLEEVE

100% POLYESTER

STYLE NUMBER
815304

SIZES: 140/152 - 164/S - M/L - XL/2XL

JR £ 38,99

SR £ 45,99



This comfortable goalkeeper shirt with stretch is ideal for hockey because of the large fit that makes the shirt suitable to wear as a layer on top of protective clothing. The cuffs are finished with comfortable rib material and have a high stretch content. The pattern on the body is sublimated and therefore remains beautiful even after frequent washing. The goalkeeper shirt features a minimal V-neckline and printed logos. Mesh at the side seams provides ample ventilation. The back of the shirt is slightly longer than the front for an optimal fit.



Neon Yellow
815304 - 4004



Coral
815304 - 6620



Black
815304 - 8000

Available to end of stock 2024

MISSION GOALKEEPER SHIRT

100% POLYESTER

STYLE NUMBER
815303

SIZES: 140/152 - 164/S - M/L - XL/XXL

JR £ **44,25**

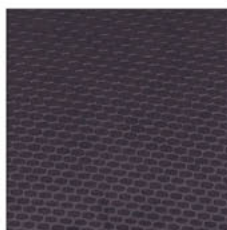
SR £ **51,99**



This keeper shirt is ideal for hockey: because of its loose fit it makes it possible to wear protective clothing underneath. The cuffs are finished with comfortable rib material and have a high stretch content. The pattern on the body is sublimated and therefore remains pristine even after frequent washing. The shirt also features a collar and small lines in a contrast colour. The back of the shirt is slightly longer than the front, for an optimal fit.



Black - Anthracite
815303 - 8900



ESSENCE BASELAYER LONG SLEEVE SHIRT

88% POLYESTER, 12% ELASTANE

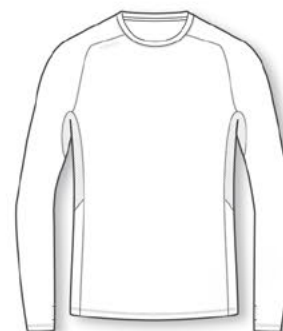
STYLE NUMBER
846000

SIZES: 128 - 140 - 152 - 164 - S - M - L - XL - 2XL

JR £ **18,75**

SR £ **23,99**

The Reece Essence Baselayer Long Sleeve Shirt has a slim fit due to its high stretch level. There are mesh panels at the neck and armpits for extra ventilation. The raglan sleeve insert ensures optimal freedom of movement. The sleeves are equipped with thumbholes. The flat stitching increases comfort.



White
846000 - 2000



Black
846000 - 8000



Available to end of stock **2025**

ESSENCE BASELAYER SHORTS

88% POLYESTER, 12% ELASTANE

STYLE NUMBER
838003

SIZES: 128 - 140 - 152 - 164 - S - M - L - XL - 2XL

JR £ **15,25**

SR £ **17,99**

Thanks to the combination of 88% polyester and 12% elastane, the Reece Essence Baselayer Shorts are your ideal sports underwear. The Reece Essence Baselayer Shorts have a high stretch level and thus a slim fit. The flat seams provide extra comfort. The elastic waistband keeps the Reece Essence Baselayer Shorts perfectly in place.



White
838003 - 2000



Black
838003 - 8000



Available to end of stock **2025**

JAX SOCKS

50% POLYESTER, 49% POLYAMIDE, 1% ELASTANE

STYLE NUMBER
840008

SIZES: 25/29 - 30/35 - 36/40 - 41/44

JR £ **10,99** SR £ **12,99**

The Reece Jax Socks ensure that you impress all your teammates with the detailed sublimated design. The socks have a perfect fit due to the stretch in the socks, even with shin guards! The elastic upper edge keeps the socks in place and the terry footbed provides extra comfort. The socks have an anatomical foot with left/right indication and are non-shrinkable. Mix & match these socks with other items from the Reece limited package for a complete look!



Dark Green
840008 - 1110

Diva Pink
840008 - 6630

Mint - Multi Colour
840008 - 1123

Available to end of stock 2023

OXLEY SOCKS

80% HIGH STRETCH POLYESTER, 17% POLYAMIDE, 3% ELASTANE

STYLE NUMBER
840007

SIZES: 25/29 - 30/35 - 36/40 - 41/44

JR £ **10,99** SR £ **12,99**

The Oxley Socks, available in various designs, are high-quality hockey socks made of a mix of polyamide, polyester and elastane. Mix and match these socks with the other items in the limited package. The sock has a perfect fit, with an anatomic foot and a comfortable sole with a terry cloth heel. The elastic waistband keeps the sock comfortably in place. The sock is seamlessly stitched for optimal wearing comfort. Does not shrink and maintains its rich colour even after frequent washing.



Multi Colour
840007 - 1234



Neon Blue
840007 - 5555

MATCH CLOTHING

GLENDEN SOCKS

75% POLYAMIDE, 15% POLYPROPYLENE, 5% ELASTANE, 5% COTTON

STYLE NUMBER
840002

SIZES: 25/29 - 30/35 - 36/40 - 41/44

JR £ **10,99** SR £ **12,99**

The Glenden sock, available in various colourways, is a high-quality hockey sock made of polyamide, polypropylene, cotton and elastane. The sock has a perfect fit, with an anatomic foot and a comfortable sole and heel of terry. The elastic board keeps the sock in its place. The sock is seamlessly stitched for optimal wearing comfort. Does not shrink and colours remain bright even after frequent washing.



Army Green
840002 - 1030

Diva Pink
840002 - 3648



Red - Navy
840002 - 6700

Navy - Red
840002 - 7600

Available to end of stock.

HERVEY SOCKS

98% POLYAMIDE, 1% POLYESTER, 1% ELASTANE

STYLE NUMBER
840005

SIZES: 25/29 - 30/35 - 36/40 - 41/44

JR £ **10,99** SR £ **12,99**

The Hervey sock, available in various designs, is a high quality hockey sock made of polyamide, polyester and elastane. The sock has a perfect fit, with an anatomic foot and a comfortable sole and heel of terry fabric. The elastic board keeps the sock in its place. The sock is seamlessly stitched for optimal wearing comfort. Does not shrink and colours remain bright even after frequent washing.



Coral
840005 - 3080



Navy
840005 - 7000

SURREY SOCKS

97% POLYAMIDE, 3% ELASTANE

STYLE NUMBER
840004

SIZES: 25/29 - 30/35 - 36/40 - 41/44

JR £ **13,25**

SR £ **15,50**

The Surrey sock, available in various designs, is a high quality hockey sock made of polyamide, polyester and elastane. The sock has a perfect fit, with an anatomic foot and a comfortable sole and heel of terry fabric. The elastic board keeps the sock in its place. The sock is seamlessly stitched for optimal wearing comfort. Does not shrink and colours remain bright even after frequent washing.



Mint - Black
840004 - 1168



Neon Green - Black
840004 - 1870



White - Black
840004 - 2800



Neon Coral - White
840004 - 3085



Neon Orange - Navy
840004 - 3237



Neon Yellow - Black
840004 - 4810



Neon Pink - White
840004 - 6165



Black - Neon Yellow
840004 - 8410

AMAROO SOCKS

97% POLYAMIDE, 3% ELASTANE

STYLE NUMBER
840006

SIZES: 25/29 - 30/35 - 36/40 - 41/44

JR £ 13,25

SR £ 15,50

With the Amaroo Socks and its colorful, unique designs, you'll own the hockey field. The designs of the Amaroo socks are a design collab with Dutch top hockey players Marloes Keetels, Pepijn Luijck, Sian Keil, Jelle Galema, Josine Koning, Glenn Schuurman and Lars Balk! The stockings therefore have a unique print personal story. The Amaroo Sock is a high-quality hockey sock made of elastane and polyamide. The sock has a perfect fit, with an anatomical foot and a comfortable terry sole and heel. The elastic hem keeps the sock in place. The sock is seamlessly stitched for optimal wearing comfort.



White - Mint - Cotton Candy
840006 - 2536



White - Black
840006 - 2800



Neon Orange - Navy
840006 - 3237



Diva Pink - Purple
840006 - 3653



Neon Yellow - Black
840006 - 4810



Cotton Candy - Mint
840006 - 6004



Knockout Pink - Sky Blue
840006 - 6556



Pink
840006 - 6600



Coral
840006 - 6620



Navy - Orange
840006 - 7300



Navy - Red - White
840006 - 7620



Black - Neon Pink
840006 - 8006



Black - White
840006 - 8200



Black - Neon Yellow
840006 - 8410



Black - Cotton Candy
840006 - 8633

Available to end of stock.

UNI PRO SOCKS

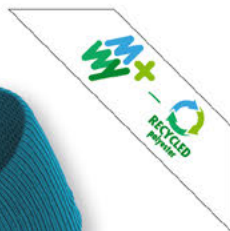
73% RECYCLED POLYESTER, 12% POLYAMIDE, 12% POLYPROPYLENE, 3% ELASTANE

STYLE NUMBER
440125

SIZES: 25/29 - 30/35 - 36/40 - 41/44 - 45/48

JR £ **9,25**

SR £ **10,99**



For both football and hockey, the Uni Pro Socks are ideal. The socks have a double elastic border, a protective impact zone around the ankle and a knitted mesh structure on the back. The socks provide optimal moisture regulation during the game. Due to the high stretch level and the anatomical foot, the socks fit nicely. The socks are made of recycled polyester and have a left-right indication and antibacterial finish in the sole.



Mint
440125 - 1160



White
440125 - 2000



Royal
440125 - 5000



Petrol
440125 - 5530



Red
440125 - 6000



Magenta
440125 - 6660



Navy
440125 - 7000



Purple
440125 - 7670



Black
440125 - 8000



Grey
440125 - 9000

UNI SOCKS II

80% HIGH STRETCH POLYESTER, 17% POLYAMIDE, 3% ELASTANE

SIZES: 25/29 - 30/35 - 36/40 - 41/44 - 45/48

JR £ **7,75**

STYLE NUMBER
440001

SR £ **8,99**

These knee length socks from Stanno are made of 'high stretch' polyester, for the best fit. Shin area is extra stretchable for shinguard placement. Mesh area at rear of sock for extra breathability. Around the ankle the sock has a protective impact zone. And to prevent scouring, and therefore blisters, the sock has a flat seam and a reinforced heel, sole and toe. Due to the double elasticated cuff the sock stays in place. These anatomically shaped socks are provided with a left/right fitting indicator.



Purple
440001 - 0130



Green
440001 - 1000



Bottle Green
440001 - 1020



Neon Green
440001 - 1080



White
440001 - 2000



Orange
440001 - 3000



Neon Orange
440001 - 3230



Yellow
440001 - 4000



Neon Yellow
440001 - 4190



Amber
440001 - 4444



Royal
440001 - 5000



Sky Blue
440001 - 5210



Red
440001 - 6000



Maroon
440001 - 6090



Neon Pink
440001 - 6160



Navy
440001 - 7000



Black
440001 - 8000



Anthracite
440001 - 9990



COMBI SOCKS

80% HIGH STRETCH POLYESTER, 17% POLYAMIDE, 3% ELASTANE

STYLE NUMBER
440106

SIZES: 25/29 - 30/35 - 36/40 - 41/44 - 45/48

JR £ **7,75**

SR £ **8,99**

These knee length socks from Stanno are made of 'high stretch' polyester, for the best fit. Shin area is extra stretchable for shinguard placement. Mesh area at rear of sock for extra breathability. Around the ankle the sock has a protective impact zone. And to prevent scouring, and therefore blisters, the sock has a flat seem and a reinforced heel, sole and toe. Due to the double elasticated cuff the sock stays in place. These anatomically shaped socks are provided with a left/right fitting indicator.



Green - White
440106 - 0610



White - Royal
440106 - 2500



White - Red
440106 - 2600



White - Black
440106 - 2800



Orange - White
440106 - 3200



Orange - Black
440106 - 3800



Yellow - Black
440106 - 4800



Royal - White
440106 - 5200



Royal - Yellow
440106 - 5400



Maroon - Sky Blue
440106 - 6050



Red - White
440106 - 6200



Navy - Sky Blue
440106 - 7550



Black - White
440106 - 8200



Black - Yellow
440106 - 8400



Black - Red
440106 - 8600

RING SOCKS

80% HIGH STRETCH POLYESTER, 17% POLYAMIDE, 3% ELASTANE

STYLE NUMBER

440105

SIZES: 25/29 - 30/35 - 36/40 - 41/44 - 45/48

JR £ **7,75**

SR £ **8,99**

These knee length socks from Stanno are made of 'high stretch' polyester, for the best fit. Shin area is extra stretchable for shinguard placement. Mesh area at rear of sock for extra breathability. Around the ankle the sock has a protective impact zone. And to prevent scouring, and therefore blisters, the sock has a flat seem and a reinforced heel, sole and toe. Due to the double elasticated cuff the sock stays in place. These anatomically shaped socks are provided with a left/right fitting indicator.



Green - White
440105 - 0610

White - Black
440105 - 2800

Orange - White
440105 - 3200

Orange - Black
440105 - 3800



Yellow - Green
440105 - 4100

Yellow - Royal
440105 - 4500

Yellow - Black
440105 - 4800

Royal - White
440105 - 5200



Royal - Yellow
440105 - 5400

Red - White
440105 - 6200

Red - Yellow
440105 - 6400

Red - Black
440105 - 6800



Black - White
440105 - 8200

Black - Yellow
440105 - 8400

Black - Red
440105 - 8600

Black - Red - White
440105 - 8690



ORIGINAL SOCKS

80% HIGH STRETCH POLYESTER, 17% POLYAMIDE, 3% ELASTANE

STYLE NUMBER

440108

SIZES: 25/29 - 30/35 - 36/40 - 41/44 - 45/48

JR £ **7,75**

SR £ **8,99**

These knee length socks from Stanno are made of 'high stretch' polyester, for the best fit. Shin area is extra stretchable for shinguard placement. Mesh area at rear of sock for extra breathability. Around the ankle the sock has a protective impact zone. And to prevent scouring, and therefore blisters, the sock has a flat seam and a reinforced heel, sole and toe. Due to the double elasticated cuff the sock stays in place. These anatomically shaped socks are provided with a left/right fitting indicator.



White - Green
440108 - 2100

White - Royal
440108 - 2500

White - Red
440108 - 2600

White - Black
440108 - 2800



Yellow - Black
440108 - 4800

Royal - White
440108 - 5200

Red - White
440108 - 6200

Red - Yellow
440108 - 6400



Red - Black
440108 - 6800

Black - White
440108 - 8200

Black - Yellow
440108 - 8400



UNI FOOTLESS SOCKS

92% POLYPROPYLENE, 8% ELASTANE

STYLE NUMBER

440112

SIZES: MINI - JR - SR

JR £ **5,50**

SR £ **6,50**

Footless socks are commonly used in field hockey and can be combined with an ankle brace. Because of the ankle brace the space in the shoe is tight already and the foot is already protected. In addition, people choose footless socks because they're more durable than socks that include an insole. You can wear your favorite sports socks under the footless sock. This footless sock is 100% colour fast, shrink-free and made of soft, comfortable material.



Green
440112 - 1000



White
440112 - 2000



Orange
440112 - 3000



Yellow
440112 - 4000



Royal
440112 - 5000



Red
440112 - 6000



Navy
440112 - 7000



Black
440112 - 8000

PRIME COMPRESSION SOCKS

82% POLYAMIDE, 14% PES NANOFRONT, 4% ELASTANE

STYLE NUMBER
444000

SIZES: 35/38 - 39/42 - 43/46

JR £ **23,50** SR £ **27,50**

These Stanno compression socks reduce moisture and swelling, which ensures that wearing these socks has a preventive effect against injuries. The pressure that compression socks exert on the lower leg provides benefits in various sports. In this way, the blood flow to the heart is optimized. The compression socks have a preventive effect against calf pain, muscle strains and cramps. The socks can be used on a daily basis, for example when practicing a standing profession. In addition, you use these socks as support during sports or as recovery after your sports activity. The socks have a snug fit due to the high stretch content and the anatomical foot. Special yarn is used in the footbed with nanofront that provides an anti-slip function. Another advantage: the socks are quick-drying. Take care of your legs and feet by wearing these socks!



White
444000 - 2000

Neon Yellow
444000 - 4004



Navy
444000 - 7000



Black
444000 - 8000

PRIME CREW SOCKS

76% POLYAMIDE, 21% PES NANOFRONT, 3% ELASTANE

STYLE NUMBER
444001

SIZES: 35/38 - 39/42 - 43/46

JR £ **12,25** SR £ **14,50**

Are you looking for high-quality crew sport socks? Then choose these sports socks from Stanno that are suitable for every (team) sport. The socks have a snug fit due to the high stretch content. Unique yarn is used in the footbed with a nano front that provides an anti-slip function. The socks have an anatomical foot and are quick-drying.



White
444001 - 2000

Neon Yellow
444001 - 4004



Navy
444001 - 7000

Black
444001 - 8000



PRIME QUARTER SOCKS

65% POLYAMIDE, 32% PES NANOFRONT, 3% ELASTANE

STYLE NUMBER
444002

SIZES: 35/38 - 39/42 - 43/46

JR £ **7,99** SR £ **9,50**

Choose for these Stanno sports socks if you are looking for ankle-high socks for any (team) sport. The socks are comfortable due to the high stretch and anatomical foot. Special yarn with nanofront is used in the footbed that provides anti-slip function. The socks are fast drying and also suitable for daily use.



White
444002 - 2000

Neon Yellow
444002 - 4004



Navy
444002 - 7000

Black
444002 - 8000



ELITE SOCKS UNISEX

85% POLYPROPYLENE, 6% COTTON, 5% POLYAMIDE, 4% ELASTANE

STYLE NUMBER
442103

SIZES: 36/40 - 41/44 - 45/48

JR £ **6,99**

SR £ **7,99**

These socks from Stanno have an anatomically shaped fit, provided with a high quality, elastic polypropylene fiber, for a comfortable feel. The high stretch content ensures an optimal fit. The material mix (85% polypropylene, 6% cotton, 5% polyamide, 4% elastane) ensures optimal thermal regulation and moisture transport. There's a left/right indication at the foot.



White
442103 - 2000



Black
442103 - 8000



NELSON 2-PACK CREW SOCKS

80% COTTON, 18% POLYAMIDE, 2% ELASTANE

STYLE NUMBER
842000

SIZES: 35/38 - 39/42 - 43/46

JR £ **9,25**

SR £ **10,99**

These all-round sports socks from Reece come in a 2-pack. They have a high stretch and a mesh structure on the foot's instep. The terry footbed makes the socks feel soft. Useable for every sport.



White - Black
842000 - 2800



Creame - Vintage Green
842000 - 2815





NATIONAL HOCKEY TEAM
WOMEN, GERMANY

 **Reece**

REECEAUSTRALIA.COM

PROUD PARTNER

The collaboration with the German Hockey Association (DHB) has already been going on since 2015. As a proud clothing partner, we are pleased with the great results from the DHB. The first place at the World Championship for the Honamas (men) in early 2023 is a unique achievement we are very proud of. Die Danas (ladies) are also competing with the elite. The uniforms are designed in close collaboration every season, to achieve the optimal appearance of the teams. A shirt that reflects the dynamics of the game, with details that tell the unique story of the team. In the current shirt, for example, the collar forms the beak of the famous German eagle, as a powerful symbol for unity and team spirit.

 **DHB**
Deutscher
Hockey-Bund e.V.



© WSP / Frank Uijlenbroek

NATIONAL HOCKEY TEAM
MEN, GERMANY

 **Reece**

REECEAUSTRALIA.COM

PROUD PARTNER

The collaboration with the German Hockey Association (DHB) has already been going on since 2015. As a proud clothing partner, we are pleased with the great results from the DHB. The first place at the World Championship for the Honamas (men) in early 2023 is a unique achievement we are very proud of. Die Danas (ladies) are also competing with the elite. The uniforms are designed in close collaboration every season, to achieve the optimal appearance of the teams. A shirt that reflects the dynamics of the game, with details that tell the unique story of the team. In the current shirt, for example, the collar forms the beak of the famous German eagle, as a powerful symbol for unity and team spirit.


DHB
Deutscher
Hockey-Bund e.V.

REECE CATALOGUE 2023



TOPS & PANTS

VALLA QUARTER ZIP TOP

100% POLYESTER

STYLE NUMBER
808111

SIZES: 128 - 140 - 152 - 164 - S - M - L - XL - 2XL

JR £ **30,99**

SR £ **36,50**

The Valla Quarter Zip Top has a regular fit and a stand-up collar with a zip up to the top of the chest. The Valla Quarter Zip Top is made of polyester and has a raglan sleeve insert that ensures optimal freedom of movement. These sleeves also have a textured fabric. The Valla Quarter Zip Top also has thumbholes and narrow splits in the side seams.



Navy
808111 - 7000



Black
808111 - 8000



Available to end of stock **2025**

MILES PANTS

100% POLYESTER

STYLE NUMBER

832001

SIZES: 128 - 140 - 152 - 164 - S - M - L - XL - 2XL

JR £ **24,75**

SR £ **28,99**

These Miles Pants have a slim fit and zippers on the calves. The pants are made of 100% polyester. The pants have an elastic waistband with drawstring to keep the pants in place. The pants also have two side pockets with high-quality SBS zippers.



Navy
832001 - 7000



Black
832001 - 8000

Available to end of stock 2025

PREMIUM FULL ZIP TOP LADIES

100% POLYESTER

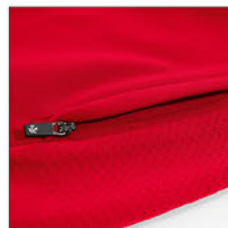
STYLE NUMBER
808658

SIZES: XS - S - M - L - XL

£ **50,99**



This comfortable top is ideal to wear before, during and after sports. Thanks to the soft, brushed inside, the top is pleasantly warm and feels comfortable. The connecting hem and cuffs are made of elastic rib material. The top has a feminine, fitted fit. On the front there are two side pockets with zipper.



Royal
808658 - 5000



Red
808658 - 6000



Navy
808658 - 7000



Black
808658 - 8000

Available to end of stock 2024

ICON TTS PANTS LADIES

100% POLYESTER

STYLE NUMBER
832611

SIZES: XS - S - M - L - XL

£ **34,99**



These comfortable training pants are ideal to wear before, during and after exercise. Thanks to the soft, light brush inside, the Icon TTS Pants are pleasantly warm and feel good. The pants have a nice ladies fit. At the bottom, the zippers from the ankles continue to the knee. This makes it easy to put the pants on and off, even over your shoes. On the front the pants have two side pockets with a zipper. The waistband consists of an elastic ribbed hem with a drawstring.



Black
832611 - 8000



Navy
832611 - 7000



Available to end of stock 2024

PREMIUM FULL ZIP TOP

100% POLYESTER

STYLE NUMBER
808110

SIZES: 128 - 140 - 152 - 164 - S - M - L - XL - 2XL

JR £ **43,50**

SR £ **50,99**



This comfortable top is ideal to wear before, during and after training. Thanks to the soft, brushed inside, the top is warm and feels comfortable. The collar and cuffs are made of elastic ribbed material. The top has a regular fit. There are two side pockets with zips on the front.



Royal
808110 - 5000



Red
808110 - 6000



Navy
808110 - 7000



Black
808110 - 8000

Available to end of stock 2024

ICON TTS PANTS

100% POLYESTER

STYLE NUMBER

832000

SIZES: 128 - 140 - 152 - 164 - S - M - L - XL - XXL

JR £ **25,50**

SR £ **29,99**



These comfortable training pants are perfect to wear before, during and after exercise. Thanks to the soft, light brush inside, the Icon TTS Pants are pleasantly warm and feel good. At the bottom, the zippers from the ankles continue to the knee. This makes it easy to put the pants on and off, even over your shoes. On the front the pants have two side pockets with a zipper. The waistband consists of an elastic ribbed hem with a drawstring. The pants have a regular fit.



Black
832000 - 8000



Navy
832000 - 7000



Available to end of stock 2024

CLEVE TTS TOP ROUND NECK UNISEX

100% POLYESTER

STYLE NUMBER

808107

SIZES: 128 - 140 - 152 - 164 - S - M - L - XL - XXL

JR £ **36,99**

SR £ **43,50**



This comfortable training top has an optimal fit and is ideal for casual, training and sports. The round neck top has a brushed inner for extra comfort. The collar and cuffs are made of elastic rib material. Shoulders and upper arm are equipped with tone in tone Reece tape. Embroidered Reece logo at the front.



Royal
808107 - 5000



Red
808107 - 6000



Navy
808107 - 7000



Black
808107 - 8000

Available to end of stock 2023

ICON TTS PANTS

100% POLYESTER

STYLE NUMBER

832000

SIZES: 128 - 140 - 152 - 164 - S - M - L - XL - XXL

JR £ **25,50**

SR £ **29,99**



These comfortable training pants are perfect to wear before, during and after exercise. Thanks to the soft, light brush inside, the Icon TTS Pants are pleasantly warm and feel good. At the bottom, the zippers from the ankles continue to the knee. This makes it easy to put the pants on and off, even over your shoes. On the front the pants have two side pockets with a zipper. The waistband consists of an elastic ribbed hem with a drawstring. The pants have a regular fit.



Black
832000 - 8000



Navy
832000 - 7000



Available to end of stock 2024

CLEVE TTS HOODED TOP FULL ZIP LADIES

100% POLYESTER

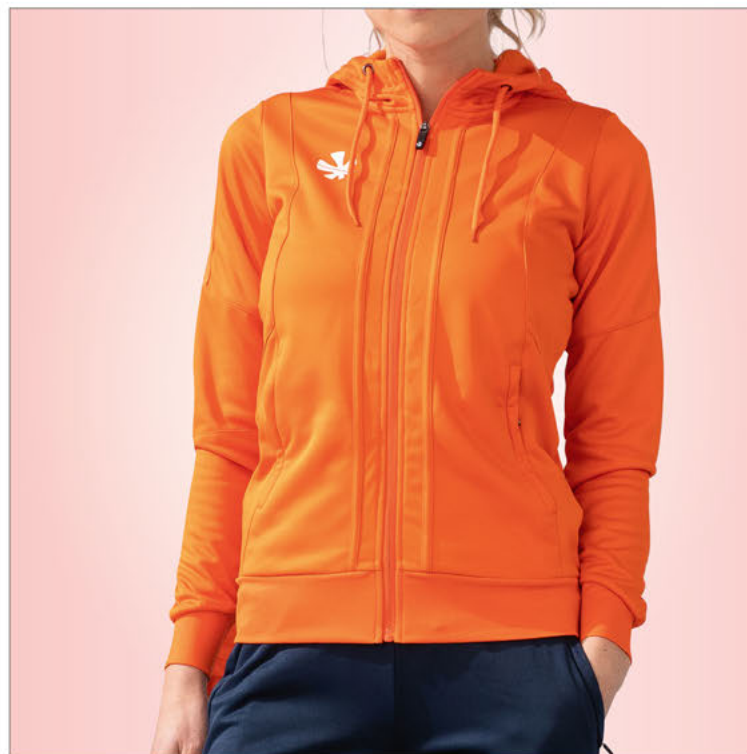
STYLE NUMBER
808654

SIZES: XS - S - M - L - XL

£ **48,99**



This sporty hooded jacket has a ladies fit and is ideal for casual, training and sports. The jacket has a soft inside for extra comfort. The jacket contains two zipped pockets on the front. The collar and cuffs are made of elastic rib material. Shoulders and upper arm are equipped with tone in tone Reece tape. Embroidered Reece logo at the front.



White
808654 - 2000



Orange
808654 - 3000



Royal
808654 - 5000



Red
808654 - 6000



Navy
808654 - 7000



Black
808654 - 8000

Available to end of stock 2023

CLEVE TTS HOODED TOP FULL ZIP UNISEX

100% POLYESTER

STYLE NUMBER

808010

SIZES: 128 - 140 - 152 - 164 - S - M - L - XL - XXL

JR £ **41,75**

SR £ **50,99**



This sporty hooded jacket has a regular fit and is ideal for casual, training and sports. The jacket has a soft inside for extra comfort. The jacket contains two zipped pockets on the front. The collar and cuffs are made of elastic rib material. Shoulders and upper arm are equipped with tone in tone Reece tape. Embroidered Reece logo at the front.



White
808010 - 2000



Orange
808010 - 3000



Royal
808010 - 5000



Red
808010 - 6000



Navy
808010 - 7000



Black
808010 - 8000

Available to end of stock 2023

TOPS & PANTS

VARSIITY TTS TOP FULL ZIP LADIES

100% POLYESTER

STYLE NUMBER
808647

SIZES: XS - S - M - L - XL

£ **48,99**



This comfortable top is ideal for wearing before, during and after sports. The brushed inside, upstanding collar and elastic cuffs make the top nicely warm. The top has a feminine, tailored fit. Two pockets with zip on the front, contrasting coloured piping in the side. The logos on the arm are embroidered, printed on the chest. The fabric of which the top is made, polyester TTS, is smooth, durable material that is easy to maintain.



Royal - White
808647 - 5200



Red - White
808647 - 6200



Black - White
808647 - 8200



Navy - White
808647 - 7200



Diva Pink
808647 - 3648

Available to end of stock.

Varsity TTS Top Full Zip Unisex

100% Polyester

STYLE NUMBER
808002

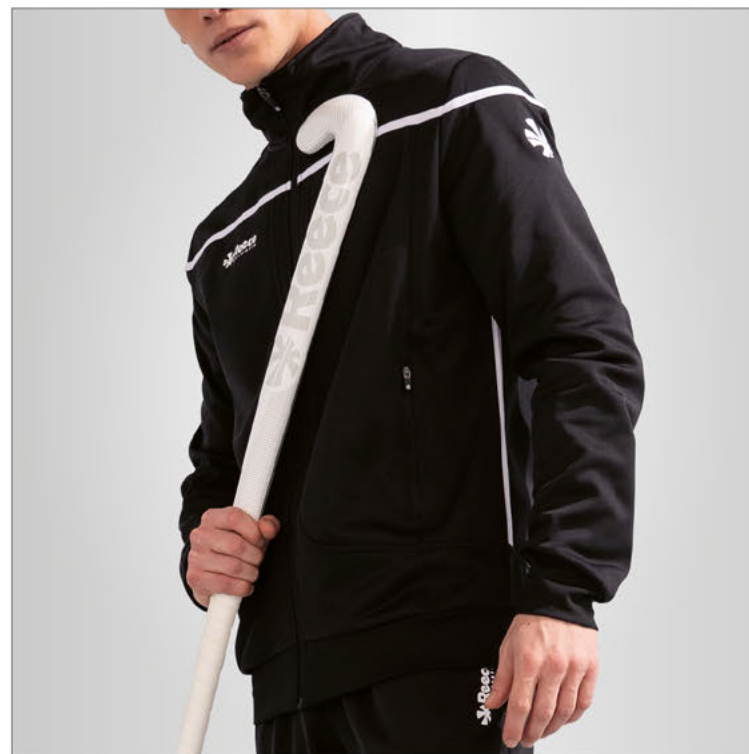
SIZES: 128 - 140 - 152 - 164 - S - M - L - XL - XXL

JR £ 41,75

SR £ 48,99



This comfortable top is ideal for wearing before and after sports. The brushed inside, upstanding collar and elastic cuffs make the top nicely warm. The top has a perfect, tailored fit. Two pockets with zip on the front, contrasting coloured piping in the side. The logos on the arm are embroidered, printed on the chest. The fabric of which the top is made, polyester TTS, is smooth, durable material that is easy to maintain.



Royal - White
808002 - 5200



Red - White
808002 - 6200



Black - White
808002 - 8200

Available to end of stock.

VARSITY WOVEN JACKET LADIES

100% POLYESTER

STYLE NUMBER
808650

SIZES: XS - S - M - L - XL

£ **51,99**



This lightweight training jacket (100% polyester ripstop) has a ladies fit. It has mesh panels down the sides of the jacket. The sleeves contain a smooth taffeta lining. The jacket has two pockets with zips and an upright collar. The jacket also comes with an elastic hem plus an opening in the lining for ease of printing.



Red - White
808650 - 6200



Navy - White
808650 - 7200



Black - White
808650 - 8200



Varsity Woven Jacket Unisex

100% Polyester

STYLE NUMBER
808005

SIZES: 128 - 140 - 152 - 164 - S - M - L - XL - XXL

JR £ 51,99

SR £ 60,99



This lightweight training jacket (100% polyester ripstop) has panels of mesh in the side and a lining of mesh in the body. The sleeves contain a smooth taffeta lining. The jacket has two pockets with zip and an upright collar. The elastic hem at the bottom keeps the jacket in place. Thanks to the opening in the lining, the jacket is suitable for printing.



Royal - White
808005 - 5200



Red - White
808005 - 6200



Navy - White
808005 - 7200



Black - White
808005 - 8200

Varsity Woven Pants Unisex

100% Polyester

Style Number
831000

Sizes: 128 - 140 - 152 - 164 - S - M - L - XL - XXL

JR £ 33,99

SR £ 39,99



These lightweight training pants are made of a strong and durable fabric (100% polyester ripstop). The pants have zips up to the knees, making it easy to put the pants on and off over your shoes. Two side pockets with zips at the front. With mesh lining and mesh panel on the back, just like the distinctive Reece lining. The pants have an elastic waistband with drawstring and an elastic finish at the ankles.



Black
831000 - 8000



Navy
831000 - 7000

Available to end of stock.



CLEVE BREATHABLE JACKET LADIES

40D NYLON RIBSTOP (8000 MM / 3000 MPV)

STYLE NUMBER
853609

SIZES: XS - S - M - L - XL

£ **60,50**



This functional, comfortable athletic jacket with ladies fit is made of a material that ensures that the jacket is wind- and waterproof and dirt-repellent as well as highly breathable. The Cleve Breathable jacket has a mesh lining in the body and a smooth tafetta lining in the sleeves. The front features two zipped side pockets and a zipped chest pocket. For extra comfort in the cold, the jacket has an elastic band with stoppers at the waist, at the cuffs and also in the hood.



Navy
853609 - 7000



Black
853609 - 8000



Available to end of stock 2023

CLEVE BREATHABLE PANTS LADIES

40D NYLON RIBSTOP (8000 MM / 3000 MPV)

STYLE NUMBER
853610

SIZES: XS - S - M - L - XL

£ **50,50**



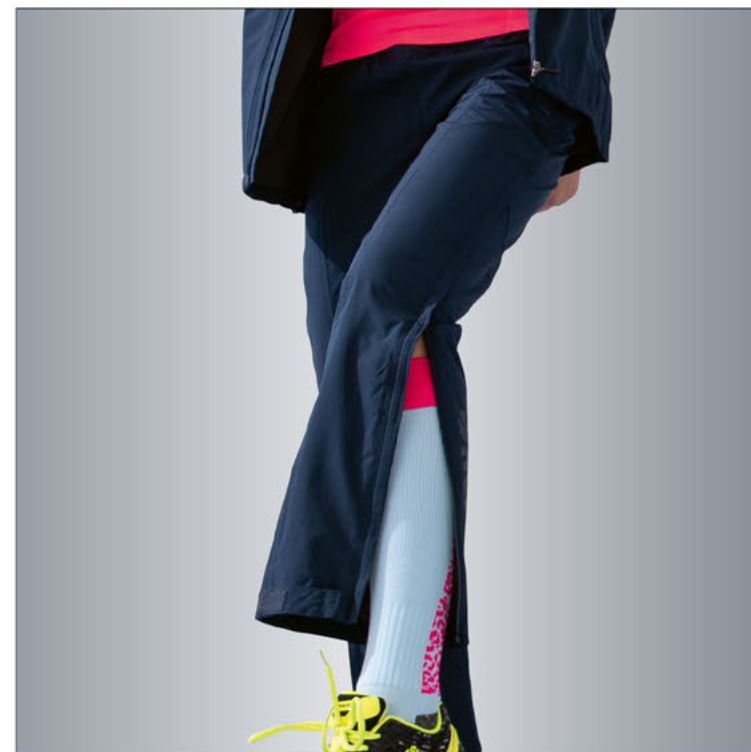
These Cleve Breathable sweatpants with ladies fit are made of material that ensures that the trousers are wind- and waterproof and dirt-repellent as well as offering high breathability. The legs have an extra-long zip, right up to the hip, so you can easily put on and take off the trousers over your sports shoes. The trousers have a mesh lining and smooth tafetta on the calves. The front features two slit pockets with zipper. The waistband is elastic and contains a drawstring, at the ankles the trousers have a velcro closure.



Navy
853610 - 7000



Black
853610 - 8000



Available to end of stock 2023

CLEVE BREATHABLE JACKET

40D NYLON RIBSTOP (8000 MM / 3000 MPV)

STYLE NUMBER
853003

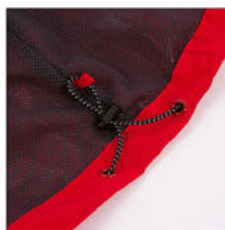
SIZES: 128 - 140 - 152 - 164 - S - M - L - XL - XXL

JR £ **51,50**

SR £ **60,50**



This functional, comfortable athletic jacket is made of a material that ensures that the jacket is wind- and waterproof and dirt-repellent as well as highly breathable. The Cleve Breathable jacket has a mesh lining in the body and a smooth tafetta lining in the sleeves. At the front there are two zipped side pockets and a zipped chest pocket. For extra comfort in the cold, the jacket has an elastic band with stoppers at the waist, at the cuffs and also in the hood.



Red
853003 - 6000



Navy
853003 - 7000



Black
853003 - 8000

Available to end of stock 2023

CLEVE BREATHABLE PANTS

40D NYLON RIBSTOP (8000 MM / 3000 MPV)

STYLE NUMBER
853004

SIZES: 128 - 140 - 152 - 164 - S - M - L - XL - XXL

JR £ **42,99**

SR £ **50,50**



These Cleve Breathable sweatpants are made of material that ensures that the trousers are wind- and waterproof and dirt-repellent as well as offering high breathability. The legs have an extra-long zip, right up to the hip, so you can easily put on and take off the trousers over your sports shoes. The trousers have a mesh lining and smooth tafetta on the calves. The front features two slit pockets with zip. The waistband is elastic and contains a drawstring, at the ankles the trousers have a velcro closure.



Navy
853004 - 7000



Black
853004 - 8000



Available to end of stock 2023

VARSITY BREATHABLE JACKET LADIES

100% POLYESTER (8000MM / 3000 MVP)

STYLE NUMBER
853607

SIZES: 116 - 128 - 140 - 152 - XS - S - M - L - XL

JR £ **44,25**

SR £ **51,99**



This functional, comfortable training jacket with a ladies fit is made of woven polyester (8000MM / 3000MVP). This material ensures that the jacket is wind proof and water resistant with a high breathability. The body contains a mesh lining and there's smooth taffeta in the sleeves. At the front two pockets with zip and a chest pocket with zip. For extra comfort in the cold, the jacket has an elastic strap with stoppers at the waist and also in the hood. Thanks to the opening in the lining, the jacket is suitable for printing.



Diva Pink
853607 - 3648



Black - White
853607 - 8200



Available to end of stock.

VARSITY BREATHABLE PANTS LADIES

100% POLYESTER (8000MM / 3000 MVP)

STYLE NUMBER
853608

SIZES: 116 - 128 - 140 - 152 - XS - S

JR £ **33,99**

SR £ **39,99**



These training pants with ladies fit are made of 100% woven polyester (8000MM / 3000MVP). This fabric ensures that the pants are wind- and waterproof and also have a great breathability. The legs contain an extra long zip, up to the hip, so you can easily pull the pants on and off over your shoes. The pants have a mesh lining and panel of mesh on the back. Two side pockets with zip at the front. The waistband is elastic and contains a cord, there's a velcro closure at the ankles.



Diva pink
853608 - 3648



VARSITY BREATHABLE JACKET UNISEX

100% POLYESTER (8000MM / 3000 MVP)

STYLE NUMBER

853000

SIZES: 128 - 140 - 152 - 164 - S - M - L - XL - XXL

JR £ **44,25**

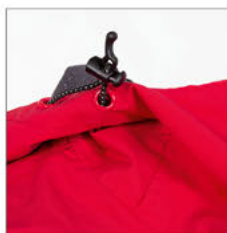
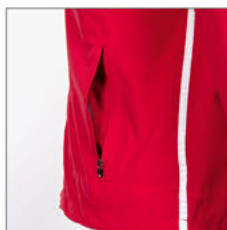
SR £ **51,99**



This functional, comfortable training jacket is made of woven polyester (8000MM / 3000MVP). This material ensures that the jacket is wind proof and water resistant with a high breathability. The body contains a mesh lining and there's smooth taffeta in the sleeves. At the front two pockets with zip and a chest pocket with zip. For extra comfort in the cold, the jacket has an elastic strap with stoppers at the waist and also in the hood. Thanks to the opening in the lining, the jacket is suitable for printing.



Red - White
853000 - 6200



Available to end of stock.

PERTH JACKET

100% POLYESTER

STYLE NUMBER

856006

SIZES: S - M - L - XL - 2XL

£ **79,99**

This functional, comfortable Reece Perth Jacket is made entirely of polyester. The combination of softshell and (padded) ribstop material on the top of the jacket ensures that the jacket is wind and water resistant and also has great breathability. The jacket has a hood with elastic cord and the zipper on the front is closed with a storm flap on the inside. The side pockets are closed with high-quality SBS zippers and the inner pocket is large enough for your phone, for example. The jacket has a round and longer back and the bottom has an elastic cord with stopper. The ends of the sleeve are adjustable with a Velcro closure and the thumb holes provide extra warmth and comfort!



Black - Anthracite
856006 - 8900



Available to end of stock **2025**

TUMBY LONG COACH JACKET

100% POLYESTER

STYLE NUMBER
857000

SIZES: S - M - L - XL - XXL - XXXL

£ **110,99**



The Tumbby Long Coach Jacket protects you from the cold of rain and wind and keeps you warm. The jacket is water repellent, and taped seams provide extra waterproofing on the shoulders. The high hooded collar can be tightened with an elastic cord and keeps your neck and head feeling warm. This long quilted jacket features a high quality SBS zip, which is covered by an overlapping storm flap to offer added protection from the wind. The bottom of the jacket also features a drawstring. Thanks to the adjustable cuffs on the sleeves, with which the sleeve opening can be made smaller, cold and wind can be kept at bay; everything to keep you nice and warm! The jacket has two zippered side pockets, one inside pocket.



Black
857000 - 8000



Available to end of stock 2023

MACKAY PUFFER ANORAK JACKET

100% POLYESTER

STYLE NUMBER
856004

SIZES: XS - S - M - L - XL

£ **88,50**



The Mackay Puffer Anorak Jacket is an ideal jacket to keep you feeling warm. The Anorak is padded, lightweight and easy to put on over the head. The stand-up collar with hood keeps your neck nice and warm. Equipped with kangaroo pocket with zip. With the elastic cuffs on the sleeves you keep cold and wind at bay.



Army Green
856004 - 1030



Available to end of stock.



© WSP / Rodrigo Jaramillo

NATIONAL HOCKEY TEAM
WOMEN, BELGIUM

PROUD PARTNER

The Royal Belgian Hockey Association is considered an important player worldwide. The hockey men won the world title in 2018 and became second at the World Championship this year. Besides these titles, the Belgian hockey men also won a silver medal at the Olympic Games in Rio. The Red Panthers, the woman's team of the KBHB, is also working hard to become a giant in the hockey world. Since 2013, Reece Australia has been working with both the men and women of the KBHB. The outfits are given a lot of attention and each uniform is designed in close consultation with the Association. Outfits for true winners!

 **Reece**

REECEAUSTRALIA.COM



REECE CATALOGUE 2023

SPONSORSHIPS



© WSP / Frank Uijlenbroek

NATIONAL HOCKEY TEAM
MEN, BELGIUM

PROUD PARTNER

The Royal Belgian Hockey Association is considered an important player worldwide. The hockey men won the world title in 2018 and became second at the World Championship this year. Besides these titles, the Belgian hockey men also won a silver medal at the Olympic Games in Rio. The Red Panthers, the woman's team of the KBHB, is also working hard to become a giant in the hockey world. Since 2013, Reece Australia has been working with both the men and women of the KBHB. The outfits are given a lot of attention and each uniform is designed in close consultation with the Association. Outfits for true winners!

 **Reece**

REECEAUSTRALIA.COM



ARBH - KBHB

REECE CATALOGUE 2023

SPONSORSHIPS



SWEAT COLLECTION

STUDIO T-SHIRT LADIES

75% COTTON, 20% POLYESTER, 5% ELASTANE

STYLE NUMBER
860618

SIZES: XS - S - M - L - XL - 2XL

£ **27,99**



This must-have basic T-shirt with a round neck from Reece should not be missing from your (sports) wardrobe. This shirt is a unique item with a narrow ribbing and printed logos. The tops and trousers from the Studio Collection are great to combine with the items from the Racket Club Collection; they have the same colours. Choose this versatile Reece Studio T-shirt Ladies, if you like to combine comfort and style.



Vintage Green
860618 - 1125



Creme
860618 - 2822



Black
860618 - 8000

Available to end of stock **2024**

STUDIO SWEAT SHORTS LADIES

75% COTTON, 20% POLYESTER, 5% ELASTANE

STYLE NUMBER
838610

SIZES: XS - S - M - L - XL - 2XL

£ **29,99**



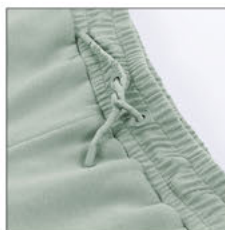
Always handy: a comfortable, high waist short in ladies' fit with straight legs. The elasticated waistband with drawstring makes these easy shorts comfortable to wear, and they have side pockets without a zip. Ideal for everyday or sports wear. The tops and bottoms from the Studio Collection combine well with the items from the Racket Club Collection; they have the same colours. Choose this versatile Reece Studio Sweat Shorts Ladies if you like to combine comfort and style.



Vintage Green
838610 - 1125



Creme
838610 - 2822



Available to end of stock **2024**

STUDIO ROUND NECK SWEAT TOP LADIES

75% COTTON, 20% POLYESTER, 5% ELASTANE

STYLE NUMBER
865615

SIZES: XS - S - M - L - XL - 2XL

£ **43,99**



Looking for a comfortable jumper for training or everyday use with ladies' fit? Then this lovely Studio sweater with a round neck from Reece is for you. The jumper has a great fit and elastic cuffs made of rib material. The details on the sleeve make this jumper extra playful. The items from the Studio Collection combine well with the items from the Racket Club Collection; they have the same colours. Choose this versatile Round Neck Sweat Top Ladies if you like to combine comfort and style.



Vintage Green
865615 - 1125



Creme
865615 - 2822



Black
865615 - 8000

Available to end of stock **2024**

STUDIO CUFFED SWEAT PANTS LADIES

75% COTTON, 20% POLYESTER, 5% ELASTANE

STYLE NUMBER
834642

SIZES: XS - S - M - L - XL - 2XL

£ **44,50**



Are you looking for comfortable trousers for training or everyday use in ladies' fit? Then these Studio sweatpants from Reece are for you! These sweatpants have a relaxed fit because of the elastic waistband with drawstring and elastic cuffs at the bottom of the legs. The trousers have side pockets without zipping. The items from the Studio Collection combine well with the items from the Racket Club Collection; they have the same colours. Choose these versatile Reece Studio Cuffed Sweat Pants Ladies if you like to combine comfort and style.



Vintage Green
834642 - 1125



Creme
834642 - 2822



Black
834642 - 8000



Available to end of stock 2024

STUDIO HOODED SWEAT TOP LADIES

75% COTTON, 20% POLYESTER, 5% ELASTANE

STYLE NUMBER
865614

SIZES: XS - S - M - L - XL - 2XL

£ **43,99**



The Reece Studio Hooded Sweat Top Ladies is a fine hooded jumper for both everyday (casual) use and training. The hood has a drawstring and with the kangaroo pocket you always have your tennis/padel balls or other stuff at hand. The cuffs are made of elastic rib material for extra comfort. The fitting of this jumper is oversized. The items from the Studio Collection combine well with the items from the Racket Club Collection, they have the same colours. Choose this versatile hooded top if you love comfort and style.



Creme
865614 - 2822



Black
865614 - 8000



Available to end of stock **2024**

STUDIO LOOSE FIT SWEAT PANTS LADIES

75% COTTON, 20% POLYESTER, 5% ELASTANE

STYLE NUMBER
834641

SIZES: XS - S - M - L - XL - 2XL

£ **44,50**



The Studio Loose Fit Sweat Pants Ladies from Reece gives you an immediate relaxed feeling during sports or in your free time. These trousers are designed in ladies' fit and have straight legs and a high waist. The trousers are comfortable to wear because of the elastic waistband with drawstring. The pre-shaped pleats ensure that the trousers fall nicely. These sweatpants have side pockets without zips. The items from the Studio Collection combine well with the items from the Racket Club Collection; they have the same colours. Choose these versatile sweatpants if you like to combine comfort and style.



Creme
834641 - 2822



Black
834641 - 8000



Available to end of stock 2024

STUDIO HOODED SWEAT FULL ZIP LADIES

75% COTTON, 20% POLYESTER, 5% ELASTANE

STYLE NUMBER
865612

SIZES: 128 - 140 - 152 - XS - S - M - L - XL

JR £ **44,99** SR £ **52,99**



This comfortable top for women is made from a mix of materials for a soft and comfortable feel (75% cotton, 20% polyester, 5% elastane). The top has a zip at the front and a drawstring hood. The inside stands out thanks to the complementary colour of the fabric, while the sleeves feature signature tape and elastic rib material in the cuffs. The front features two side pockets with (covered) zippers.



Soft Rose
865612 - 0260



Deep Ocean
865612 - 7585

CLERMONT OVERSIZED HOODIE LADIES

75% COTTON, 20% POLYESTER, 5% ELASTANE WITHOUT BRUSH

STYLE NUMBER
808655

SIZES: XS - S - M - L - XL - XXL

JR £ **37,50** SR £ **43,99**



Grey Mele
808655 - 9160

You need this oversized fit hoodie! The Clermont Hoodie is made from a mix of materials that feels so soft and comfortable, you'll want to wear it all day long (75% cotton, 20% polyester, 5% elastane). The top has a kangaroo pocket on the front and a drawstring hood.



STUDIO SWEAT SHORTS LADIES

75% COTTON, 20% POLYESTER, 5% ELASTANE

STYLE NUMBER
838608

SIZES: 128 - 140 - 152 - XS - S - M - L - XL

JR £ **31,99** SR £ **37,50**



These comfortable sweat shorts for women are made from a mix of materials for a soft and comfortable feel (75% cotton, 20% polyester, 5% elastane). The shorts are suitable for both sport and casual wear, with signature tape on both sides and the characteristic Reece lines on the back. The shorts have a wide, elastic waistband with drawstring.



Deep Ocean
838608 - 7585



Black
838608 - 8000



Grey Mele
838608 - 9160

Available to end of stock.



CLASSIC SWEAT SHORTS LADIES

90% COTTON / 10% ELASTAN

STYLE NUMBER
838603

SIZES: 128 - 140 - 152 - XS - S - M - L - XL

JR £ **30,50** SR £ **35,99**



These comfortable sweat shorts are suitable for sports, but also for casual wear. The sweat shorts have a connecting waistband for a perfect fit and a soft inside for optimum wearing comfort. The shorts feature the distinctive Reece detailing on the back, which creates an optimal body shape. These are lovely shorts for summer!



Coral
838603 - 3080



THORA LOOSE FIT TEE LADIES

50% COTTON, 50% MODAL

STYLE NUMBER
860004

SIZES: 128 - 140 - 152 - XS - S - M - L - XL

JR £ **21,99**

SR £ **25,99**



This ladies shirt with a loose fit feels soft and drapes nicely on the body. The special cotton tech finish, combined with the loose fit, provides optimal comfort. The shirt has a round neck and printed logos.



Soft Rose
860004 - 0260



Mint
860004 - 1160



Deep Ocean
860004 - 7585

Available to end of stock.

STUDIO SWEAT PANTS LADIES

75% COTTON, 20% POLYESTER, 5% ELASTANE

STYLE NUMBER

834636

SIZES: 128 - 140 - 152 - XS - S - M - L - XL

JR £ **37,99**

SR £ **44,50**



The Studio Sweat Pants Ladies are made of soft and comfortable materials (75% cotton, 20% polyester, 5% elastane). The pants have a wide, elastic waistband for optimal comfort. On the front are two side pockets with (covered) zippers. On both sides is a signature tape. The elastic rib material at the bottom of the legs make the pants easy to put on and take off.



Deep Ocean
834636 - 7585



SWEAT COLLECTION

STUDIO T-SHIRT

97% COTTON, 3% ELASTANE

STYLE NUMBER
860008

SIZES: S - M - L - XL - 2XL

£ **25,99**



This basic T-shirt with a regular fit and round neck is an absolute must-have. This shirt always looks stylish for sports and casual occasions with the narrow ribbing and printed logos. The tops and bottoms from the Studio Collection are great to combine with the items from the Racket Club Collection; they have the same colours. Choose the versatile Reece Studio T-shirt Top if you like to combine comfort and style. Colour Vintage Green is made of 60% cotton and 40% polyester.



Vintage Green
860008 - 1125



White
860008 - 2000



Red
860008 - 6000



Black
860008 - 8000



Grey Melange
860008 - 9999

Available to end of stock **2024**

STUDIO POLO

50% POLYESTER, 50% VISCOSE

STYLE NUMBER

863002

SIZES: S - M - L - XL - 2XL

£ **30,50**

The Reece Studio Polo has a regular fit and is perfect for training or for casual use. The combination of 50% polyester and 50% viscose gives the fabric a pretty, luxurious effect. The polo has a slightly longer back and a ribbed collar with a button closure. A side slit ensures extra freedom of movement.



White
863002 - 2000



Navy
863002 - 7000



Black
863002 - 8000



Grey Melange
863002 - 9999



STUDIO ROUND NECK SWEAT TOP

75% COTTON, 20% POLYESTER, 5% ELASTANE

STYLE NUMBER
865117

SIZES: S - M - L - XL - 2XL

£ **43,99**



The Reece Studio Round Neck Sweat Top is a comfortable sweater for training or everyday use. This top has a round neck, playful design lines and a regular fit. The elastic cuffs are made of rib material for extra comfort. The tops and bottoms from the Studio Collection combine well with the items from the Racket Club Collection; they have the same colours. Choose the versatile Reece Studio Round Neck Sweat Top if you like to combine comfort and style.



Vintage Green
865117 - 1125



Available to end of stock **2024**

STUDIO SWEAT SHORTS

75% COTTON, 20% POLYESTER, 5% ELASTANE

STYLE NUMBER
838002

SIZES: S - M - L - XL - 2XL

£ **25,99**



Looking for fine sweat shorts? Then choose this comfortable Studio short with straight legs and a regular fit from Reece. The shorts has an elastic waistband with drawstring and side pockets without zipping. The tops and bottoms from the Studio Collection are great to combine with the items from the Racket Club Collection; they have the same colours. Choose the versatile Reece Studio Sweat Shorts if you like to combine comfort and style.



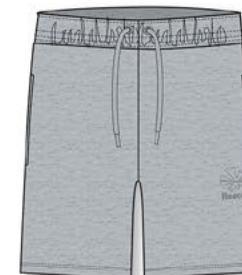
Vintage Green
838002 - 1125



Navy
838002 - 7000



Black
838002 - 8000



Grey Melange
838002 - 9999

Available to end of stock **2024**

STUDIO HOODED SWEAT TOP

75% COTTON, 20% POLYESTER, 5% ELASTANE

STYLE NUMBER
865115

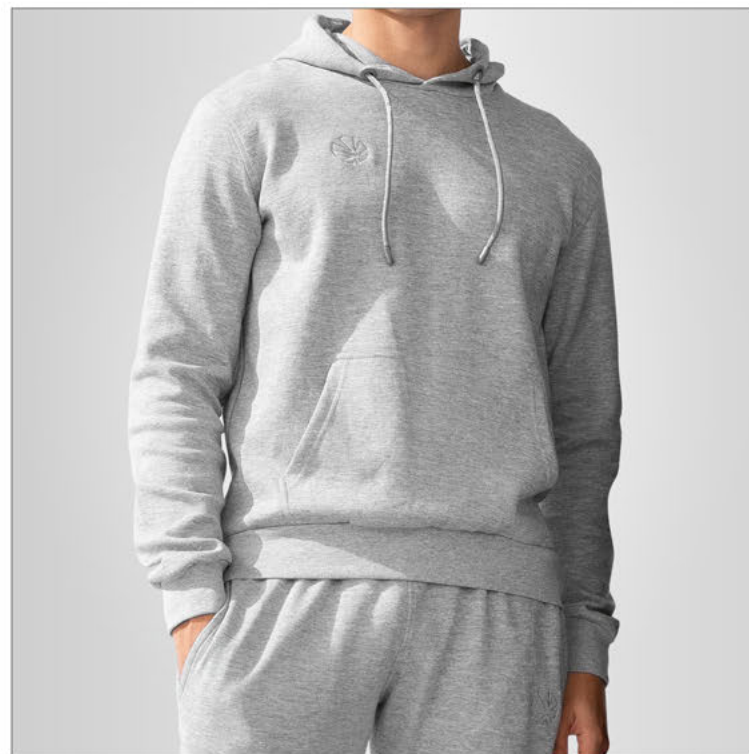
SIZES: 128 - 140 - 152 - 164 - S - M - L - XL - XXL - XXXL

JR £ **37,50**

SR £ **43,99**



This top is in regular fit and has a hood with drawstring. The top has ribbed cuffs and is also provided with a rib band at the hem. The top also has a kangaroo pocket. Nice detail are the embroidered logos.



Royal
865115 - 5000



Red
865115 - 6000



Navy
865115 - 7000



Black
865115 - 8000



Grey Melange
865115 - 9999

STUDIO SWEAT PANTS

75% COTTON, 20% POLYESTER, 5% ELASTANE

STYLE NUMBER
834007

SIZES: 128 - 140 - 152 - 164 - S - M - L - XL - XXL - XXXL

JR £ **32,75** SR £ **38,50**



These sweatpants are ideal for both training and everyday use. The sweatpants have an elastic waistband with a drawstring and a ribbed waistband that ensures that the pant fits nicely at the ankles. The sweatpants have side pockets without zips. The embroidered logos are a nice feature of these trousers. These are real all-round trousers that you will enjoy on the field, at halftime, after training or just on the couch.



Navy
834007 - 7000



Black
834007 - 8000



Grey Melange
834007 - 9999

GREGORY SWEAT PANTS

50% COTTON / 50% POLYESTER

STYLE NUMBER
834205

SIZES: 128 - 140 - 152 - 164 - S - M - L - XL - XXL

JR £ **27,25** SR £ **31,99**



These comfortable sweatpants have a soft inside for extra comfort and a flattering slim fit. The Gregory Sweat Pants have two pockets zip on the front and a back pocket. The waistband contains a drawstring, so you can wear the pants exactly as you like to.

Available to end of stock.



Navy
834205 - 7000



Black
834205 - 8000



Grey Mele
834205 - 9160



SPONSORSHIPS

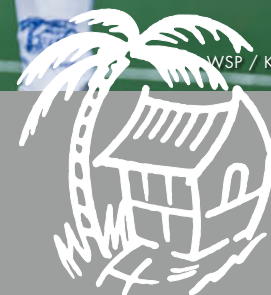
SV KAMPONG HOCKEY
WOMEN, THE NETHERLANDS

PROUD PARTNER

For many years, Reece is the proud partner of SV Kampong's hockey teams. A seven-time national champion (men) and playing in the premier league (women), this is a hockey club that scores highly. The shirt of SV Kampong can be recognized by the classic white-blue base, these are the fixed colours of SV Kampong from day one. Of course, the logo is prominently displayed on the chest. The name Kampong is Malaysian for small village and the logo also contains the characteristic palm tree that refers to the rich history of the club.



REECEAUSTRALIA.COM



WSP / Koert Suyk

SV Kampong

REECE CATALOGUE 2023



© WSP / Koen Suyk

SV KAMPONG HOCKEY
MEN, THE NETHERLANDS

PROUD PARTNER

For many years, Reece is the proud partner of SV Kampong's hockey teams. A seven-time national champion (men) and playing in the premier league (women), this is a hockey club that scores highly. The shirt of SV Kampong can be recognized by the classic white-blue base, these are the fixed colours of SV Kampong from day one. Of course, the logo is prominently displayed on the chest. The name Kampong is Malaysian for small village and the logo also contains the characteristic palm tree that refers to the rich history of the club.

 **Reece**

REECEAUSTRALIA.COM



SV Kampong

REECE CATALOGUE 2023



RACKET CLUB COLLECTION

RACKET TANK TOP LADIES

92% POLYESTER, 8% ELASTANE

STYLE NUMBER
869623

SIZES: XS - S - M - L - XL - 2XL

£ **25,99**



The Reece Racket Tank Top Ladies is an asset to the wardrobe of every racket sports player. This tank top has a ladies' fit and a racerback model with a feminine V-neck. Inserted mesh panels provide ventilation. The front is sublimated, and the top is decorated with printed logos. Excellent for printing.



Vintage Green
869623 - 1125



Blush
869623 - 6623



Available to end of stock **2024**

IVY SINGLET LADIES

92% POLYESTER, 8% ELASTANE

STYLE NUMBER
869621

SIZES: XS - S - M - L - XL - XXL

£ **25,99**



Stay cool and benefit from optimal freedom of movement with the Ivy Singlet. This racerback sports top for ladies has a mesh insert on the lower back for excellent ventilation. The breathable material, with Climatic finish, keeps skin dry while the racerback model allows more freedom of movement in the arms. The top has a ladies fit.



White
869621 - 2000



Coral
869621 - 6620



Navy
869621 - 7000



Black - Anthracite
869621 - 8900

RACKET SHIRT LADIES

92% POLYESTER, 8% ELASTANE

STYLE NUMBER

860616

SIZES: XS - S - M - L - XL - XXL

£ **38,50**



Are you a big fan of tennis or other racket sports? With this stylish Reece Australia shirt with feminine v-neck, screen printed logos and a sublimated front panel you can play in style. The ClimaTec finish and mesh inserts keep your skin dry. The raglan sleeves insert guarantees optimal freedom of movement. This shirt can also be used for other workouts. Have fun training! This shirt is made of 92% polyester and 8% elastane.



Vintage Green
860616 - 1125



Blush
860616 - 6623



Black
860616 - 8000



Black - Anthracite
860616 - 8900

Available to end of stock **2024**

RACKET POLO LADIES

90% POLYESTER, 10% ELASTANE

STYLE NUMBER
863602

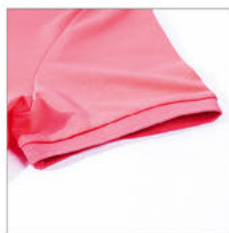
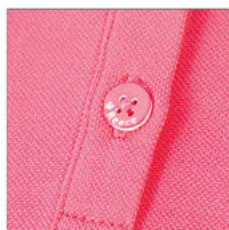
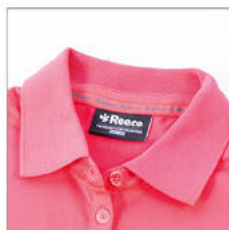
SIZES: XS - S - M - L - XL - XXL

£ **32,99**



This Racket Polo is made in ladies' fit. The polo is comfortable and lightweight, with fine qualities to play during any racket sport. The polo collar has a button closure and is made of rib fabric. The narrow slit on the side gives extra freedom of movement. This polo shirt is slightly longer at the back. The top is adorned with printed logos.

Available to end of stock 2024



Blush
863602 - 6623



Bright Navy
863602 - 7255

RACKET POLO TANK TOP LADIES

90% POLYESTER, 10% ELASTANE

STYLE NUMBER
869622

SIZES: XS - S - M - L - XL - XXL

£ **32,99**



Tennis, padel, or squash, it's all possible in this comfortable lightweight Reece polo. With fine details such as a zip collar, a slit in the side seam, and a slightly longer back panel this polo gives you all the comfort you need during your play. The polo is made of 90% polyester and 10% elastane, which provides enough stretch during the game.



White
869622 - 2000



Navy
869622 - 7000

RACKET PLEATED SKORT LADIES

85% POLYESTER, 15% ELASTANE

STYLE NUMBER
839603

SIZES: XS - S - M - L - XL - 2XL

£ **27,99**



The Reece Racket Pleated Skort is perfect for ladies who like to steal the show on the court. This multifunctional pleated skort has inner shorts and a high, elastic waistband with Reece branding. You can put your tennis balls or phone in your pocket, so convenient! This skort is lightweight.



Creme
839603 - 2822



Black
839603 - 8000



Available to end of stock **2024**

RACKET SKORT LADIES

85% POLYESTER, 15% ELASTANE

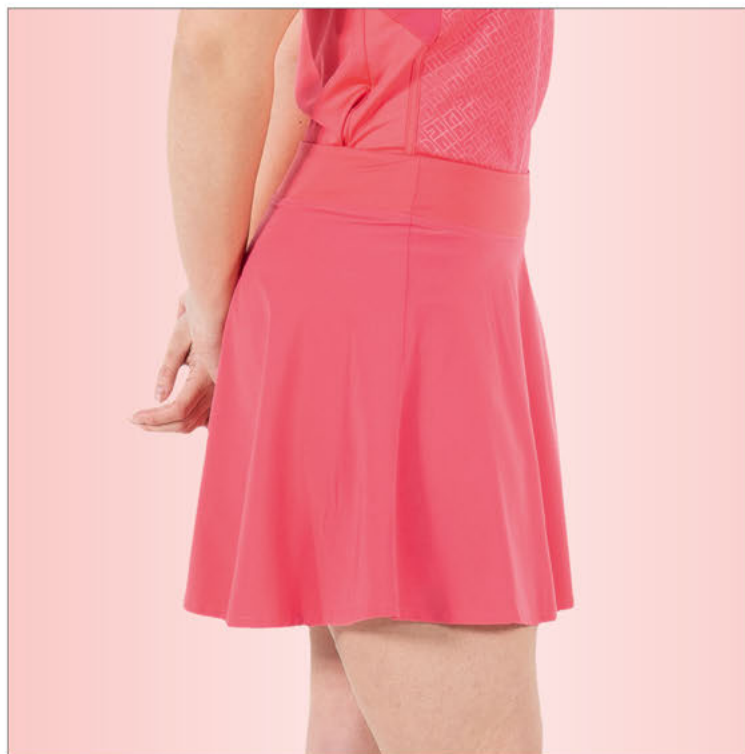
STYLE NUMBER
839602

SIZES: XS - S - M - L - XL - XXL

£ **32,99**



A lovely skirt, suitable for any racket sport, that's the Reece Racket Short Ladies. The skirt has knitted inner shorts for extra comfort as well as ball storage. The material of the skirt is 85% polyester and 15% elastane for extra stretch. The lightweight skirt has a high, elastic waistband, which is great for those who love ultimate freedom of movement. Printed Reece logos make this skirt special. Besides of racket sports, this sports skirt is also suitable for other sports.



Vintage Green
839602 - 1125



White
839602 - 2000



Blush
839602 - 6623



Navy
839602 - 7000



Black
839602 - 8000



Available to end of stock **2024**

RACKET DRESS LADIES

80% POLYESTER, 20% ELASTANE

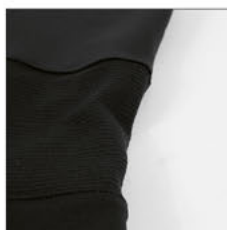
STYLE NUMBER
868602

SIZES: XS - S - M - L - XL - XXL

£ **54,99**



Appear on the tennis court in style by wearing this Reece Racket Dress Ladies. This dress has a racer back for extra support and a sporty look. This dress with a round neckline is made from 80% polyester and 20% elastane and has a ClimaTec finish that keeps you dry. Inserted mesh panels provide ventilation. The dress fits nicely and has screen printed logos. A perfect dress for any game, all you have to worry about is winning the match!



Blush
868602 - 6623



Bright Navy
868602 - 7255



Black
868602 - 8000

Available to end of stock 2024

RACKET HOTPANTS LADIES

80% POLYESTER, 20% ELASTANE

STYLE NUMBER
838609

SIZES: XS - S - M - L - XL - XXL

£ **29,99**



These hotpants are perfect to wear underneath a tennis dress. The Reece Hotpants Ladies are made of 80% polyester and 20% elastane. These hotpants are very comfortable due to the high waistband. The printed logos make it a special item. Combine with the Reece Racket Dress Ladies and create the perfect matching set. The hotpants are suitable for both tennis and other work outs.



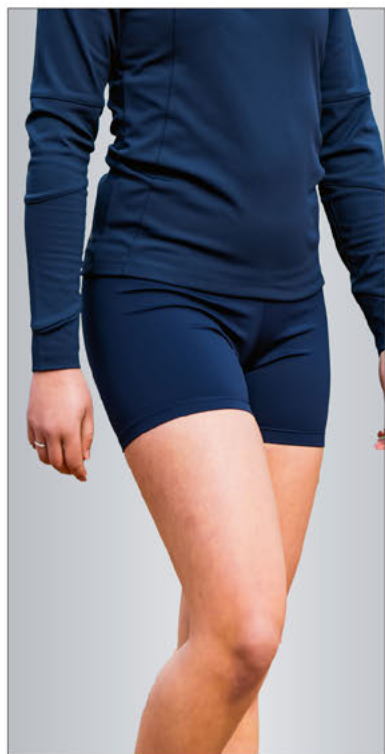
Coral
838609 - 6620



Navy
838609 - 7000



Black
838609 - 8000



GRAFTON SHORTS LADIES

94% POLYESTER, 6% ELASTANE

STYLE NUMBER
837600

SIZES: 128 - 140 - 152 - XS - S - M - L - XL - XXL

JR £ **23,75** SR £ **27,99**



The Grafton Ladies Short is an ideal sports shorts for running, fitness and tennis. The short is made of highly elastic, quick-drying material and contains an inner brief. In addition, it has a wide waistband with a drawstring on the inside for optimal comfort. The side pockets are suitable for tennis balls.

Available to end of stock 2023



Navy
837600 - 7000



Black
837600 - 8000

RACKET BODYWARMER LADIES

100% POLYESTER

STYLE NUMBER
867600

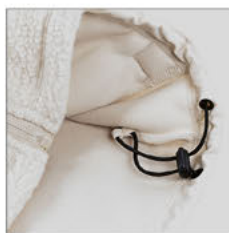
SIZES: XS - S - M - L - XL - 2XL

£ **45,99**



Feeling good on the court starts with a stylish look! With this teddy fleece body warmer from Reece, you will hit the courts with confidence and steal the show at half-time or on your way to training or competition. This body warmer has a ladies' fit and is multifunctional. This top has a high-fitting collar, a chest pocket and side pockets with a zip. Further functionalities are the storm flap and adjustable bottom with elastic cords with a stopper. This Reece Racket body warmer has a printed logo on the chest.

Available to end of stock 2024



Creame
867600 - 2822



Black
867600 - 8000

RACKET STRETCHED FIT QUARTER ZIP TOP LADIES

90% POLYESTER, 10% ELASTANE

STYLE NUMBER
808657

SIZES: XS - S - M - L - XL - XXL

£ **49,50**



This Reece top certainly gives enough freedom of movement due to the raglan sleeve insert. This quarter zip top with stand up collar guarantees a stylish and sporty look. The printed Reece logos make this fine tennistop a recognizable item that you will love to wear on the tennis court, while playing squash or padel or even with other sports. The top has a ladies fit.

Available to end of stock 2024



Navy
808657 - 7000
Available to end of stock



Black
808657 - 8000

RACKET TIGHTS LADIES

80% POLYESTER, 20% ELASTANE

STYLE NUMBER
832612

SIZES: XS - S - M - L - XL - XXL

£ **46,99**



Hit the tennis court in style with this Reece Racket Tight Ladies. Put a few tennis balls in a handy mesh storage compartment at the back of the waistband and let the game begin. The high waistband provides extra comfort during the game, as do the mesh panels at the back of your knees. The tights are made of 80% polyester and 20% elastane. These tights are perfect for keeping your legs warm.



Navy
832612 - 7000



Black
832612 - 8000



Available to end of stock 2024

VARSITY STRETCHED FIT JACKET FULL ZIP LADIES

94% POLYESTER, 6% ELASTANE

STYLE NUMBER
865610

SIZES: 128 - XS - S - M - L - XL

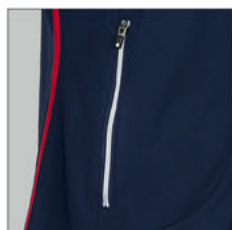
JR £ **44,25** SR £ **51,99**

This sporty top with feminine fit is comfortable and warm. The supple fabric provides optimum wearing comfort. The top has an upright collar and two zipped pockets. The cuffs contain thumb holes to keep your hands warm. With embroidered logos. The top is a perfect combination with the Reece Varsity Pants and Shorts.



Navy - White
865610 - 7200

Available to end of stock



CLEVE STRETCHED FIT JACKET FULL ZIP LADIES

90% POLYESTER, 10% ELASTANE

STYLE NUMBER
808656

SIZES: XS - S - M - L - XL - XXL

£ **51,99**



This fine jacket is made from extra stretchy material for an optimal fit. The jacket is characterised by the stylish lining, signature tape on the shoulders and upper arms, and a perfect fit. It has a raised collar, with two zipped pockets on the front. The Reece logo is embroidered on the front of the jacket and printed on the back.



Vintage Green
808656 - 1125



White - Orange - Navy
808656 - 1370



Blush
808656 - 6623



Black
808656 - 8000

Available to end of stock 2024

CLEVE STRETCHED FIT PANTS LADIES

90% POLYESTER, 10% ELASTANE

SIZES: XS - S - M - L - XL - XXL

STYLE NUMBER
834637

£ **43,99**



These stylish and comfortable athletic pants are made from extra stretchy material for an optimal fit and feature preformed pleats. The legs have long zippers up to the knee, so you can easily put on and take off the pants over your shoes. The pants have two side pockets with hidden zippers, and feature the distinctive Reece signature tape on the side. The wide, elastic waistband with drawstring on the inside ensures a comfortable fit on the hips.



Vintage Green
834637 - 1125



White
834637 - 2000



Blush
834637 - 6623



Navy
834637 - 7000



Black
834637 - 8000



Available to end of stock 2024

RACKET SHIRT

92% POLYESTER, 8% ELASTANE

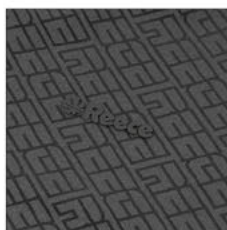
STYLE NUMBER
860006

SIZES: S - M - L - XL - XXL

£ **38,50**



Do you love to show your skills on the tennis court or during other training sessions? Then this Reece Racket Shirt for men is a good choice. The shirt is made from 92% polyester and 8% elastane with a ClimaTec finish that keeps you dry. Mesh inserts will provide ventilation and the raglan sleeves guarantee all the freedom of movement you could wish for.



Vintage Green
860006 - 1125



Bright Navy
860006 - 7255



Black
860006 - 8000



Off Black
860006 - 8890

Available to end of stock 2024

RACKET POLO

90% POLYESTER, 10% ELASTANE

STYLE NUMBER
863001

SIZES: S - M - L - XL - XXL

£ **40,99**



The Reece Racket Polo is a good choice if you like to look stylish at your tennis club, squash court, or during a game of padel. This lightweight polo shirt is made of 90% polyester and 10% elastane with extra stretch. The slits on the side give you freedom of movement. With the zipper, you can vary in appearance, zip up or zip down. The polo is slightly longer at the back and has printed Reece Australia logos. This polo is also suitable for other workouts.

Available to end of stock 2024



Vintage Green
863001 - 1125



Bright Navy
863001 - 7255

RACKET SHORTS

92% POLYESTER, 8% ELASTANE

STYLE NUMBER
837104

SIZES: S - M - L - XL - 2XL

£ **29,99**



These multifunctional Racket shorts by Reece have a mesh insert on the back and around the crotch and a narrow slit in the side seam for optimal freedom of movement. The shorts are fitted with two side pockets without a zip (e.g. for storing tennis balls). The elastic waistband with drawstring ensures a comfortable fit. The shorts have a printed logo and are excellent for printing.



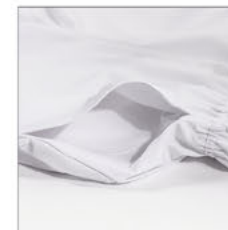
White
837104 - 2000



Black
837104 - 8000



Off Black
837104 - 8890



CLEVE STRETCHED FIT JACKET FULL ZIP

90% POLYESTER, 10% ELASTANE

SIZES: S - M - L - XL - XXL

STYLE NUMBER
808108

£ 51,99



This fine jacket is made from extra stretchy material for an optimal fit. The jacket is characterised by the stylish lining, signature tape on the shoulders and upper arms, and a perfect fit. It has a raised collar, with two zippered pockets on the front. The Reece logo is embroidered on the front of the jacket and printed on the back.

Available to end of stock 2024



Vintage Green
808108 - 1125



Black
808108 - 8000



Navy - Orange - White
808108 - 7310

Available to end of stock.

CLEVE STRETCHED FIT PANTS

90% POLYESTER, 10% ELASTAN

STYLE NUMBER
834005

SIZES: 128 - 140 - 152 - 164 - S - M - L - XL - XXL

JR £ **37,50**

SR £ **43,99**



These stylish and comfortable athletic pants are made from extra stretchy material for an optimal fit and feature preformed pleats. The legs have long zippers up to the knee, so you can easily put on and take off the pants over your shoes. The pants have two side pockets with hidden zippers, and feature the distinctive Reece signature tape on the side. The wide, elastic waistband with drawstring on the inside ensures a comfortable fit on the hips.



Navy
834005 - 7000



Black
834005 - 8000



Available to end of stock 2024

RACKET STRETCHED FIT QUARTER ZIP TOP

90% POLYESTER, 10% ELASTANE

STYLE NUMBER
808109

SIZES: S - M - L - XL - XXL

£ **49,50**



Black
808109 - 8000

This Racket Stretched Fit Quarter Zip Top with stand up collar is made for men who want to take their racket sport skills to the next level and hit the tennis court in style. The top is made of 90% polyester and 10% elastane with light brush. The raglan sleeves insert guarantees optimal freedom of movement. A nice top with printed Reece logos.

Available to end of stock 2024



VARSITY STRETCHED FIT JACKET FULL ZIP

94% POLYESTER, 6% ELASTANE

STYLE NUMBER
808008

SIZES: S - M - L - XL - XXL

£ **60,99**



This sporty top with a perfect fit is comfortable and warm. The supple fabric provides optimum wearing comfort. The top has an upright collar and two zipped pockets. The cuffs contain thumb holes to keep your hands warm. With embroidered logos. The top is a perfect combination with the Reece Varsity Pants and Shorts.



Navy - White - Red
808008 - 7260



GRAMMAR SHIRT

92% POLYESTER, 8% ELASTANE

STYLE NUMBER
860005

SIZES: S - M - L - XL - XXL - XXXL

£ **35,99**



Look good, play better. With the Grammar shirt you'll always be looking your best. This athletic shirt is made from a combination of polyester and elastane, with Climatec finish, so sweat is quickly wicked away and the shirt has a pleasant stretch. Along the side, a contrasting piping in combination with ventilating mesh makes for a stylish look.



Shocking Orange
860005 - 3647





SPONSORSHIPS

HC ORANJE-ROOD
WOMEN, THE NETHERLANDS

PROUD PARTNER

HC Oranje-Rood is one of the largest hockey clubs in the Netherlands, located in Eindhoven. The men's team plays at the highest division for many years. A few of our ambassadors play for the team based in Eindhoven. The club colours of HC Oranje-Rood are, as the name suggests, orange and red. These colours were created in 2016 from a merger of the Eindhoven clubs MHC Oranje Zwart and EMHC. Orange was the shirt colour of Oranje Zwart, red was the colour of the shirt of EMHC (both clubs had black as the second colour).



REECEAUSTRALIA.COM



Villem Vernes

HOCKEYCLUB
ORANJE-ROOD

REECE CATALOGUE 2023



© WSP / Willem Vernes

HC ORANJE-ROOD
MEN, THE NETHERLANDS

PROUD PARTNER

 **Reece**

REECEAUSTRALIA.COM

HC Oranje-Rood is one of the largest hockey clubs in the Netherlands, located in Eindhoven. The men's team plays at the highest division for many years. A few of our ambassadors play for the team based in Eindhoven. The club colours of HC Oranje-Rood are, as the name suggests, orange and red. These colours were created in 2016 from a merger of the Eindhoven clubs MHC Oranje Zwart and EMHC. Orange was the shirt colour of Oranje Zwart, red was the colour of the shirt of EMHC (both clubs had black as the second colour).






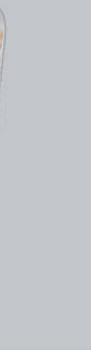
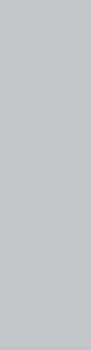
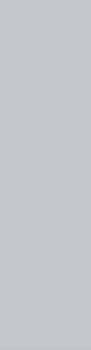
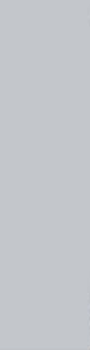




HOCKEYCLUB
ORANJE-ROOD

REECE CATALOGUE 2023



SPORTS EQUIPMENT

MODEL	PRO SUPREME		PRO POWER			BLIZZARD					
	1000 Grambusch	1000 Herzbruch	900	800	750	600	500	400	300	200	150
											
SIZE	36,5" - 37,5"	36,5" - 37,5"	36,5" - 37,5"	36,5" - 37,5"	36,5" - 37,5"	36,5"	36,5"	36,5"	36,5"	36,5"	36,5"

Our collection of sticks is composed in such a way that young and old, professional and amateur can always choose a stick that exactly matches your personal wishes. Every stick from Reece has its own material mix that results in a specific stiffness and the associated properties. In addition, the curvature, the balance point and the length of the stick are important. Differences are in line with various playing styles and therefore, with personal preferences.

MATERIAL

Most of our junior sticks consist of a combination of wood and fiberglass. While most senior sticks are made of synthetic material combinations of carbon and fiberglass. The ratio between these materials are decisive for the stiffness, the weight and feel of the stick. The exact composition can be found on each stick and in the product information text.

- » carbon: for extra stiffness and strength
- » kevlar: for vibration absorbing and impact reduction
- » fiberglass: for durability and strength
- » wood: for an optimal ball feeling

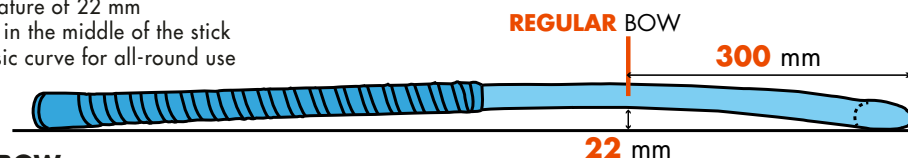
The percentage of carbon in a stick is an important indicator of the stiffness. The stiffer the hockey stick, the lower the energy loss in the bend of the stick. For this reason, players often choose sticks with a high carbon content when they're playing with strength and power. A less stiff stick enhances ball control. Ball control is important for the development of technique.

BOW / CURVATURE

Also, the curvature of a hockey stick is a very key feature. The curvature of the stick is referred to in millimetres and varies between 22 mm and 24,7 mm. The greater the curvature, the more technical the game of the player often is. Playing with a strong curvature therefore requires some practice. The bow indicates at what point the curvature begins in the stick. This can vary from a Regular Bow, Mid Bow, Low Bow to Extreme Low Bow.

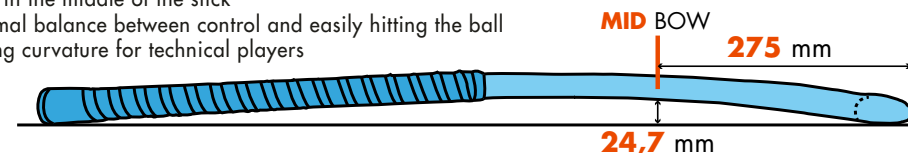
REGULAR BOW

- » curvature of 22 mm
- » bow in the middle of the stick
- » classic curve for all-round use



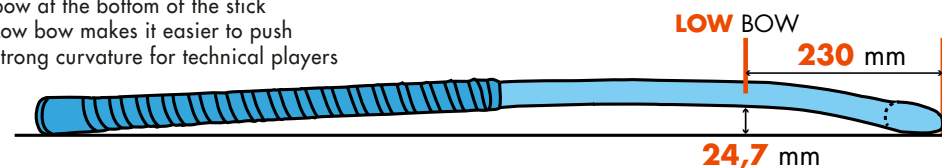
MID BOW

- » curvature of 24,7 mm
- » bow in the middle of the stick
- » optimal balance between control and easily hitting the ball
- » strong curvature for technical players



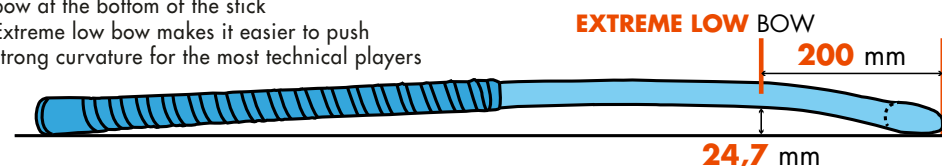
LOW BOW

- » curvature of 24,7 mm
- » bow at the bottom of the stick
- » Low bow makes it easier to push
- » strong curvature for technical players



EXTREME LOW BOW

- » curvature of 24,7 mm
- » bow at the bottom of the stick
- » Extreme low bow makes it easier to push
- » strong curvature for the most technical players



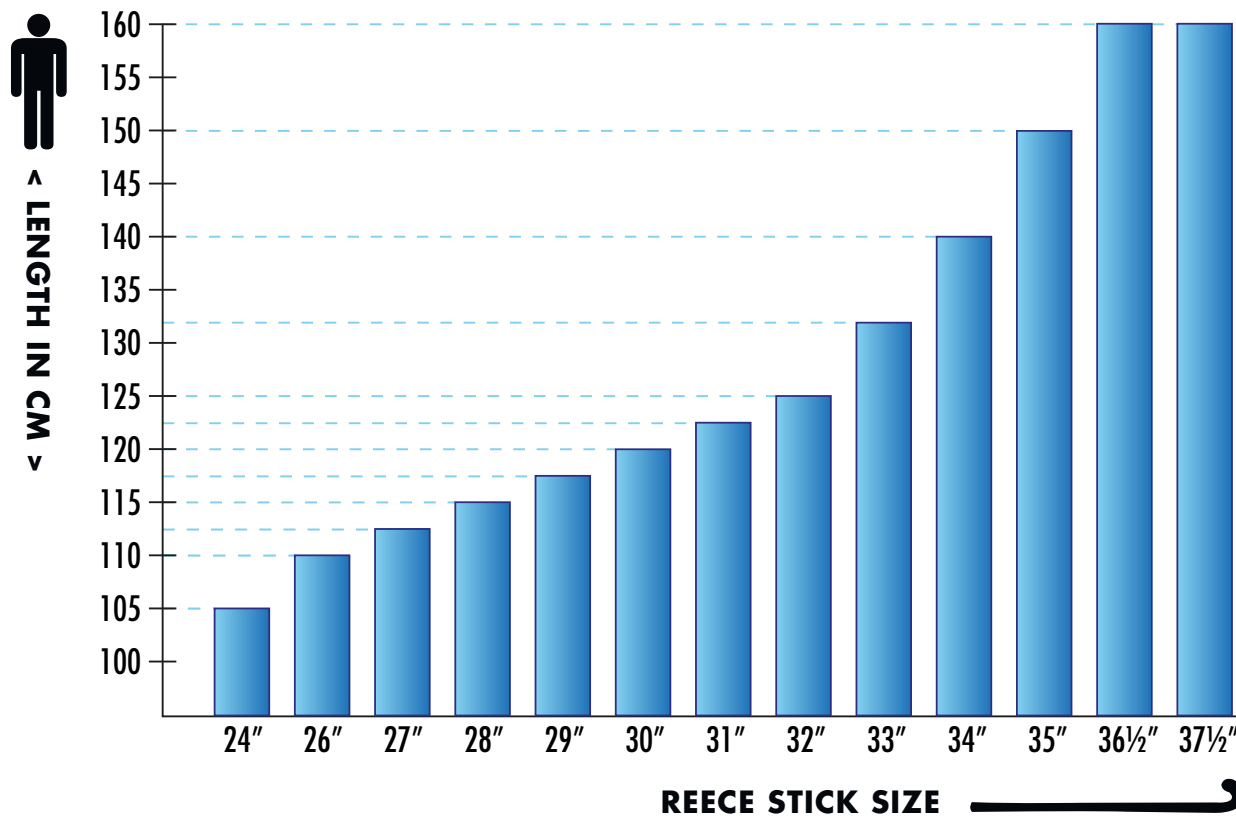
HOCKEY STICK COLLECTION

SPORTS EQUIPMENT

JUNIOR										
MODEL	Blizzard 200 JR					Alpha Junior				
										
SIZE	32" - 35"	30" - 35"	30" - 35"	30" - 35"	30" - 35"	24" - 35"	24" - 35"	24" - 35"	24" - 35"	24" - 35"

LENGTH

Hockey sticks are available from size 24" up to size 37,5". Especially for children it is important to purchase the right size stick. A too short stick decreases the impact force and has a negative influence on the body posture. A stick that is too long will cause difficulties with ball control and develops the wrong technique. The table gives a good indication of the right stick length at each height. But make sure you always get good advice with this!



PRO SUPREME 1000 GRAMBUSCH LTD HOCKEY STICK

STYLE NUMBER
889278

100% CARBON

SIZES: 36,5" - 37,5"

£ 229,99

Nobody passes you anymore with this Pro Supreme 1000 Grambusch Ltd Hockey Stick. What makes this lightweight stick so special? The German hockey internationals and brothers Tom and Mats Grambusch also play with it! Choose this lightweight stick if you want optimal control and accuracy and especially if technique is important to you. Power and control are guaranteed by the strong curve of 24.7 mm. The stick has an Extreme Low Bow (200 mm) and the 100% carbon material ensures maximum strength and ultimate ball feeling.



Black - Blue - Pink
889278 - 8566

PRO SUPREME 1000 HERZBRUCH LTD HOCKEY STICK

STYLE NUMBER
889279

100% CARBON

SIZES: 36,5" - 37,5"

£ 229,99

If Olympic medalist Timm Herzbruch plays with a stick, it must be a very good stick, right? That's right. With this Pro Supreme 1000 Herzbruch Ltd Hockey Stick you give every (drag) push extra speed. Just like Timm Herzbruch, you obviously want maximum strength and ultimate ball feeling, which is why this stick is made of 100% carbon. The Low Bow (230 mm) gives optimal ball control and accuracy. The strong 24.7mm curve is ideal for power and control. This stick is a must-have for any technical player.



Green - Silver - Neon Yellow
889279 - 1944

PRO POWER 900 HOCKEY STICK

90% CARBON, 10% KEVLAR

STYLE NUMBER
889280

SIZES: 36,5" - 37,5"

£ **219,99**

With this Pro Power 900 Hockey Stick you bring yourself to superior performance. This stick is ideal for technical players: 90% carbon and 10% Kevlar provide a number of advantages. How about maximum power, ultimate ball feeling and extra speed with your (drag) push? With this stick with Extreme Low Bow (200 mm) and strong curve (24.7 mm) you can do everything you want on the field.



Black - Gold
889280 - 8820

PRO POWER 800 HOCKEY STICK

80% CARBON, 10% KEVLAR, 10% FIBERGLASS

STYLE NUMBER
889281

SIZES: 36,5" - 37,5"

£ **204,99**

The Pro Power 800 Hockey Stick is a lightweight senior hockey stick with 80% carbon, 10% kevlar and 10% fiberglass, for superior performance of technical players. The high carbon percentage guarantees maximum power and ultimate ball feeling. The Low Bow model (230 mm) offers optimal balance between control and easy hitting and is ideal for the most technical players. The strong curve (24.7 mm) gives extra power and control, and ensures even more speed with your (drag) push.



Black - Silver
889281 - 8810

PRO POWER 750 HOCKEY STICK

75% CARBON, 10% KEVLAR, 15% FIBERGLASS

STYLE NUMBER
889282

SIZES: 36,5" - 37,5"

£ **184,99**

The Pro Power 750 is a lightweight senior hockey stick with 75% carbon, 10% kevlar and 15% fiberglass, for superior performance of technical players. The high carbon percentage guarantees maximum power and ultimate ball feeling. The Mid Bow model (275 mm) offers optimal balance between control and easy hitting. The strong curve (24.7 mm) gives extra power and control, and ensures even more speed with your (drag) push.



Black - Neon Orange
889282 - 8003

BLIZZARD 600 HOCKEY STICK

60% CARBON, 30% FIBERGLASS, 10% KEVLAR

STYLE NUMBER
889262

SIZES: 36,5"

£ **159,99**

The Blizzard 600 Hockey Stick is a top quality lightweight senior hockey stick composed of 60% carbon, 30% fiberglass and 10% Kevlar. The stick offers plenty of power, combined with a pleasant ball feeling. The added fiberglass increases the durability and flexibility of the stick, while the kevlar provides even more shock-absorbing capacity. The Extreme Low Bow model (200 mm) offers optimal balance between control and easy hitting. The strong curve (24.7 mm) gives extra power and control, and ensures even more speed with your (drag) push.



White - Gold
889262 - 2220

BLIZZARD 500 HOCKEY STICK

50% CARBON, 40% FIBERGLASS, 10% KEVLAR

STYLE NUMBER
889263

SIZES: 36,5"

£ **139,99**

The Blizzard 500 Hockey Stick is a top quality lightweight senior hockey stick that is composed of 50% carbon, 40% fiberglass and 10% Kevlar. The stick offers plenty of power, combined with a pleasant ball feeling. The added fiberglass increases the durability and flexibility of the stick, while the kevlar provides even more shock absorbing capacity. The Low Bow model (230 mm) offers optimal balance between control and easy hitting. The strong curve (24.7 mm) gives extra power and control, and ensures even more speed with your (drag) push.



White - Silver
889263 - 2210

BLIZZARD 400 HOCKEY STICK

40% CARBON, 50% FIBERGLASS, 10% KEVLAR

STYLE NUMBER
889264

SIZES: 36,5"

£ **119,99**

The Blizzard 400 Hockey Stick is a top quality lightweight senior hockey stick that is composed of 40% carbon, 50% fiberglass and 10% Kevlar. The stick offers plenty of power, combined with a pleasant ball feeling. The added fiberglass increases the durability and flexibility of the stick, while the kevlar provides even more shock absorbing capacity. The Mid Bow model (230 mm) offers optimal balance between control and easy hitting. The strong curve (24.7 mm) gives extra power and control, and ensures even more speed with your (drag) push.



White - Multi Colour
889264 - 2678

BLIZZARD 300 HOCKEY STICK

30% CARBON, 60% FIBERGLASS, 10% KEVLAR

STYLE NUMBER
889265

SIZES: 36,5"

£ **99,99**

The Blizzard 300 Hockey Stick is lightweight and made of premium materials: 30% carbon, 60% fiberglass and 10% kevlar. The stick combines power with a pleasant touch of the ball. The added fibreglass increases the durability and flexibility of the stick, while the kevlar provides even more shock absorbing capacity. The Extreme Low Bow model (200 mm) offers optimal balance between control and easy hitting. The strong curve (24.7 mm) gives extra power and control, and provides even more speed in your (drag) push.



Blue - Neon Orange
889265 - 5033

BLIZZARD 200 HOCKEY STICK

20% CARBON, 70% FIBERGLASS, 10% KEVLAR

STYLE NUMBER
889266

SIZES: 36,5"

£ **89,99**

The Blizzard 200 Hockey Stick is lightweight and made of premium materials: 20% carbon, 70% fiberglass and 10% kevlar. The stick combines power with a pleasant touch of the ball. The added fibreglass increases the durability and flexibility of the stick, while the kevlar provides even more shock absorbing capacity. The Low Bow model (230 mm) offers optimal balance between control and easy hitting. The strong curve (24.7 mm) gives extra power and control, and provides even more speed in your (drag) push.



Mint - Purple
889266 - 1176

BLIZZARD 150 HOCKEY STICK

STYLE NUMBER
889267

15% CARBON, 75% FIBERGLASS, 10% KEVLAR

SIZES: 36,5"

£ **79,99**

The Blizzard 150 Hockey Stick is lightweight and made of 15% carbon, 75% fiberglass and 10% kevlar. This combination of materials makes the stick perfect for all-round use, and ideal for developing your basic skills. The stick combines power with a pleasant touch of the ball. The added fibreglass increases the durability and flexibility of the stick, while the kevlar provides even more shock absorbing capacity. The Regular Bow model (300 mm) offers optimal balance between control and power. The curve (22 mm) makes the stick ideal for all-round use.



Red - Black
889267 - 6800

BLIZZARD 200 JR HOCKEY STICK

STYLE NUMBER
889268

20% CARBON, 70% FIBERGLASS, 10% KEVLAR

SIZES: 32" - 33" - 34" - 35"

£ **64,99**

The Blizzard 200 JR Hockey Stick is lightweight and has a composition of 20% carbon, 70% fiberglass and 10% kevlar. The addition of carbon to the hockey stick has resulted in being our best performing JR stick! This is because the stick combines hitting power with a pleasant touch. The added fiberglass increases the durability and flexibility of the stick, while the kevlar provides even more shock absorption. The Extreme Low Bow model (200 mm) is ideal for power and control. The curve (24.7 mm) makes the stick ideal for technical young hockey players.



Black - Gold
889268 - 8820

NIMBUS JR HOCKEY STICK

95% FIBERGLASS, 5% KEVLAR

STYLE NUMBER

889269

SIZES: 30" - 31" - 32" - 33" - 34" - 35"

£ **44,99**

The Nimbus JR Hockey Stick has a composition of 95% fiberglass and 5% kevlar. This combination makes the stick ideal for all-round use, and perfect for further developing your basic skills. The main material, fiberglass, adds durability and suppleness to the stick, while the added kevlar provides more shock absorption. The Regular Bow model (300 mm) is ideal for faster movements in different directions. The classic curve (22 mm) makes the stick perfect for all-round use.



Dark Green
889269 - 1110



Multi Colour
889269 - 5678



Diva Pink
889269 - 6630



Black - Blue - Pink
889269 - 8566

ALPHA JR HOCKEY STICK

WOOD, FIBERGLASS

STYLE NUMBER

889270

SIZES: 24" - 26" - 27" - 28" - 29" - 30" - 31" - 32" - 33" - 34" - 35"

£ **32,99**

The Alpha JR Hockey Stick is made of wood, enhanced with fiberglass. The lightweight stick is suitable for all-round use and ideal for further developing your basic skills. The wood base ensures optimal feel, while the added fibreglass increases the stick's durability and flexibility. The Regular Bow model (300 mm) is ideal for faster movements in different directions. The classic curve (22 mm) makes the stick perfect for all-round use.



Dark Green
889270 - 1110



Mint - Multi Colour
889270 - 1123



Blue - Neon Orange
889270 - 5033



Multi Colour
889270 - 5678



Diva Pink
889270 - 6630

PADEL RACKET

Padel is rapidly gaining ground. Not surprising because this racket sport is described as interactive, fun and challenging. For those who want to start with padel, a short explanation: padel is a mix of tennis and squash. The count is the same as for tennis. Padel is played with four people on a padel court that is surrounded by glass walls. These walls are part of the game, so the ball is not out as quickly as with tennis, so that it is easier to play long rallies. Power is, therefore, less important with padel. This allows everyone to participate in this sport.

WHAT DO YOU NEED TO PLAY PADEL?

The most important thing you need to play padel is a padel racket! That is why we have a wide range of padel rackets available for beginners, intermediates, and advanced players.

WHAT IS THE BEST PADEL RACKET FOR YOU?

Factors that are important when choosing a racket are the material, the shape of the racket, the location of the sweet spot, and the weight. We will provide you with all the information you need to make a good choice. Let us introduce you to the padel rackets from Reece.

THREE PARTS FOAM, FACE, FRAME

Basically, a padel racket is made of three parts (frame, face, foam). From the outside, it might seem like a single piece but there are in fact three parts with different compositions fused together into a single shape:

FOAM (CORE)

The impact surface is normally made of EVA foam, covered with different materials, depending on the requirements of the customer.

All padel rackets have a solid impact surface that is filled with holes to allow an easy swing in the air. This surface may be hard or soft and determine the performance of the racket.

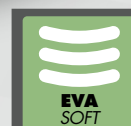
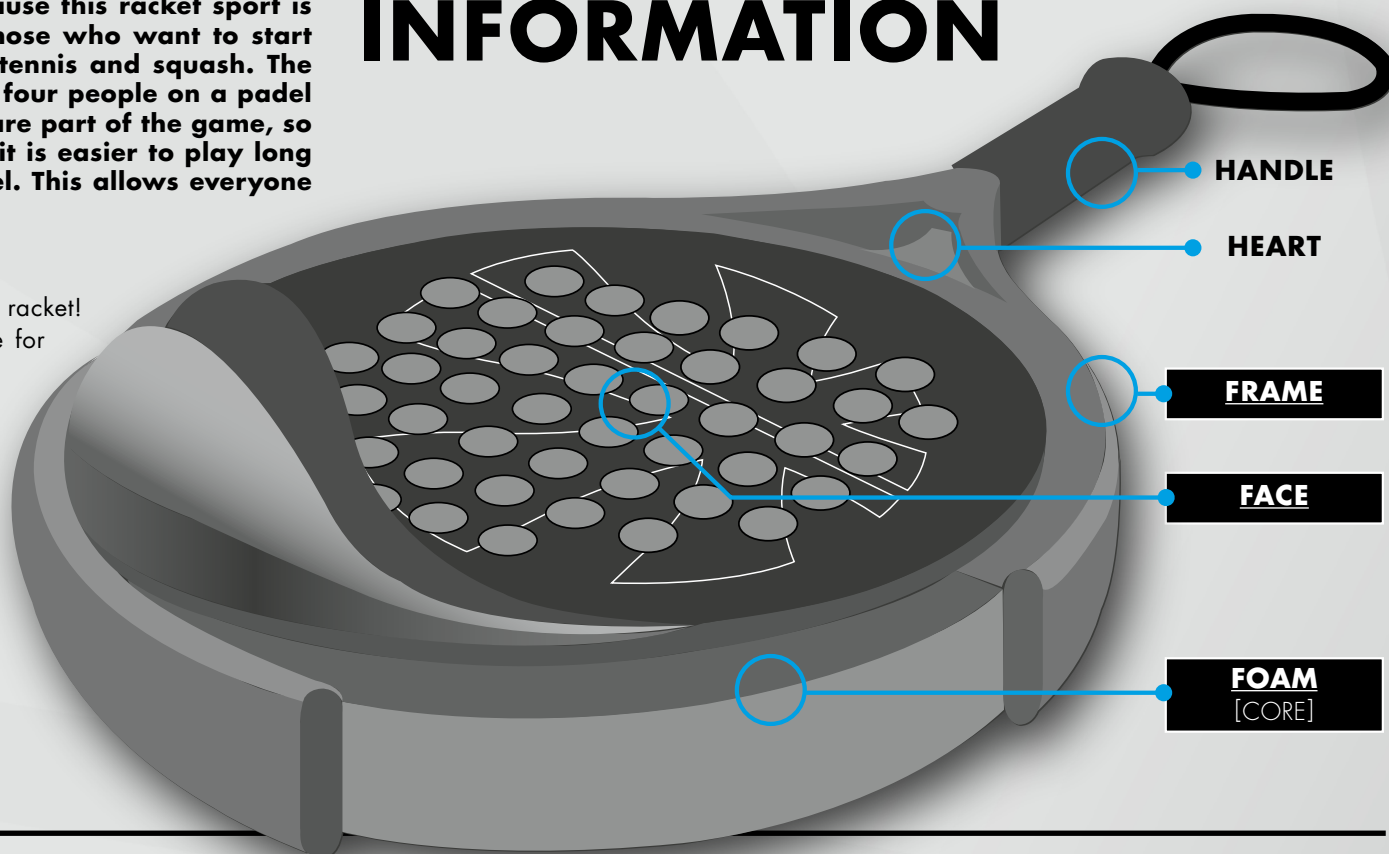
FACE

Face is the most important part of the racket, as it is the area where the ball hits and depending on their composition it gives different feelings and performance when playing. You can choose different fabrics to make rackets more durable and beautiful.

FRAME

It is an outside part of the racket, it starts from handle and revolve around the face area, it gives the racket its firmness and strength. You can choose frame according to your requirement e.g., fiberglass, 3K carbon, mix (50% carbon and 50% fiberglass).

COLLECTION INFORMATION



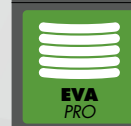
EVA
SOFT

EVA SOFT:
Low-density EVA foam provides a large amount of ball return and comfort during play.



EVA
MEDIUM

EVA MEDIUM:
Enhanced EVA foam that provides great ball return without losing power.



EVA
PRO

EVA PRO:
High-density EVA foam that increases the power and high-speed hits, with perfect control.

RACKET SPECIFICATIONS

		RACKET MODEL	Heart	Face	Frame	Rubber	Weight
ROUND (CONTROL)							
  Balance EVEN		 XPLORER CONTROL	FIBER GLASS	FIBER GLASS	FIBER GLASS	EVA SOFT	360-375 g
		 XPERIENCED CONTROL	FIBERCARBON 3k	CARBON TWIL 3K	FIBERCARBON 3k	EVA MEDIUM	360-375 g
DIAMOND (ATTACK)							
  Balance SLIGHT HEAD HEAVY		 XPLORER ATTACK	FIBERCARBON 3K	FIBER GLASS	FIBER GLASS	EVA SOFT	360-375 g
		 XPERIENCED ATTACK LIGHT	FIBERCARBON 3K	CARBON 6K	FIBERCARBON 3K	EVA MEDIUM	345-365 g
		 XPERIENCED ATTACK	FIBERCARBON 3k	CARBON 6K	FIBERCARBON 3k	EVA PRO	360-375 g
HYBRID (ATTACK)							
  Balance HEAD HEAVY		 XPERT ATTACK	CARBON 6K	CARBON 6K	FIBERCARBON 3k	EVA PRO	360-375 g

MATERIAL CHARACTERISTICS

	CARBON 6K	CARBON 3K	FIBER-CARBON	FIBER-GLASS
FLEXIBILITY When the material shows a greater degree of flexibility, the ball bounces more when it hits the padel racket.				+
POWER More power can be a weapon, but it also comes at the cost of control.	+			
COMFORT Soft material absorbs more energy, providing more comfort.				+
RESISTANCE The more rigidity, the longer the racket lasts	+			

 **Reece**

XPERT ATTACK PADEL RACKET

HYBRID SHAPE

STYLE NUMBER
889605

SIZES: ONE SIZE

£ 169,99

The best of the best in padel rackets, that's how we can describe this Reece Xpert Attack Padel racket. Let's start with the material; the frame is fibercarbon 3K, the face is carbon 6K, the heart is fibercarbon 6K. EVA pro gives your stroke extra power. The hybrid shape has a high balance point. The sweet spot is at the top of the racket. These characteristics make the racket very suitable for the attacking player. This Reece padel racket is equipped with a smart hole system, making the racket manoeuvrable. The high-quality 3D finish provides extra grip and the shock absorber ensures that your wrists are relieved while hitting. The protector ensures a longer lifespan of the racket. The weight of this racket: 360-375 g.



Black - Neon Yellow
889605 - 8004

XPERIENCED ATTACK PADEL RACKET

DIAMOND SHAPE

STYLE NUMBER
889604

SIZES: ONE SIZE

£ 149,99

With this padel racket, you can take your skills to the next level. The diamond-shaped racket is made of fibercarbon 3K and carbon 6K and has a core of EVA pro. The balance point is in the middle and the sweet spot is mid-high. This Reece padel racket is equipped with a smart hole system. Attacking becomes your second nature with this racket. The racket has a sand finish that provides more grip and control. The weight of this racket is 360-375 grams.



Black - White - Silver
889604 - 8201

XPERIENCED ATTACK LIGHT PADEL RACKET

DIAMOND SHAPE

STYLE NUMBER
889603

SIZES: ONE SIZE

£ 129,99

This lightweight (345-360 grams) racket is perfect for experienced padel players. With a fibercarbon 3K frame, a carbon 6K face and a fibercarbon 3K heart, this diamond-shaped racket is exactly what you're looking for if you find quality important. The core is made of EVA medium. This racket has the sweet spot medium-high. Because the racket has a higher balance point, you can attack with extra power. This Reece Australia padel racket is equipped with a smart hole system, making the racket manoeuvrable. Have fun playing!



Black - Blue - Neon Orange
889603 - 8554

XPERIENCED CONTROL PADEL RACKET

ROUND SHAPE

STYLE NUMBER
889602

SIZES: ONE SIZE

£ 109,99

Are you an advanced padel player? This racket is designed for the experienced player who likes to keep control. The racket has a round shape. The sweet spot is in the centre and the balance point is low, which gives extra control. The core of the racket is made of EVA medium foam. This high-quality racket is made of fibercarbon 3K and carbon 3K. The racket has a smart hole system, making the racket manoeuvrable. The weight of the racket is 360-375 grams.



Black - Blue - Neon Orange
889602 - 8553

XPLORER ATTACK PADEL RACKET

DIAMOND SHAPE

STYLE NUMBER
889601

SIZES: ONE SIZE

£ 79,99

This Reece padel racket is perfect for the player who likes an attacking playstyle. The balance point is mid to high on the racket. The sweet spot of the racket is in the middle, this way you can hit in a controlled way. The diamond-shaped racket is made of fiberglass and carbon 3K. The core is made of EVA soft. The racket has a smart hole system, making the racket easy to move. The weight of the racket: 360-375 grams.



Black - Petrol - Neon Orange
889601 - 8533

XPLORER CONTROL PADEL RACKET

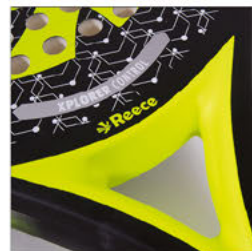
ROUND SHAPE

STYLE NUMBER
889600

SIZES: ONE SIZE

£ 64,99

This Reece padel racket allows you to give proper direction to every ball. The racket has a round shape. The balance point is even-balanced. The sweet spot in the centre, this guarantees control and stability. This racket is the right choice if you opt for stability during your stroke and are just starting out with padel. The racket has a smart hole system, making the racket manoeuvrable. The racket is made of fiberglass and the core of soft EVA. The weight of the racket is between 360-375 grams. The sand finish provides grip and control while hitting the ball.



Black - Neon Yellow
889600 - 8004

3-PACK SMASH PADEL BALLS

45% WOOL, 45% NYLON, 10% COTTON

STYLE NUMBER
889040

SIZES: ONE SIZE

£ **5,50**

The 3-Pack Smash Padel Balls are suitable for competitions and training. The core of the balls is made of reinforced rubber, which ensures an ideal bounce. The outside of the balls consists of 45% wool, 45% nylon and 10% cotton, which makes these premium balls very durable and guarantees hours of padel fun!



Neon Yellow
889040 - 4004

3-PACK ULTRA RACKET OVERGRIPS

34% PU, 66% NONWOVEN

STYLE NUMBER
889810

SIZES: NO SIZE

£ **6,99**

Tennis or padel starts with a good grip on the racket. With the Reece overgrip, you get a water-absorbing and durable grip. The grips have a thick PU layer and a non-slip grip surface. The grips feel soft and give a cushioned feeling. The grips are easy to apply because they are pre-cut with tapered ends, extra-long and self-adhesive. Packed per 3 pieces.



White
889810 - 2000



Neon Yellow
889810 - 4004



Black
889810 - 8000





BERLINER HC
WOMEN, GERMANY

PROUD PARTNER



REECEAUSTRALIA.COM

The Berliner HC is the capital club in Germany and has been playing at the highest level in the 1. Hockey Bundesliga for years. The Berliners play in a unique special design jersey, which was created in close cooperation with the players of the top teams and now represents the club and the Reece brand in the best possible way. The BHC is the flagship in the German hockey league.



SPONSORSHIPS

REECE CATALOGUE 2023



BERLINER HC
MEN, GERMANY

PROUD PARTNER

The Berliner HC is the capital club in Germany and has been playing at the highest level in the 1. Hockey Bundesliga for years. The Berliners play in a unique special design jersey, which was created in close cooperation with the players of the top teams and now represents the club and the Reece brand in the best possible way. The BHC is the flagship in the German hockey league.

 **Reece**

REECEAUSTRALIA.COM



SPONSORSHIPS

REECE CATALOGUE 2023



REVOLUTION X-BLADE

PU

STYLE NUMBER
875211

SIZES: 3.5 - 4 - 5 - 6 - 6.5 - 7 - 7.5 - 8 - 8.5 - 9 - 9.5 - 10 - 10.5 - 11 - 12

JR £ **76,50**

SR £ **89,99**

The Revolution X-Blade is Reece's model to maximize speed and control. This hockey shoe is lightweight and offers excellent grip thanks to the advanced studded sole. The studs are positioned to provide maximum grip in all directions and optimally distribute the pressure on the foot. The nose of the shoe contains an anti-wear layer. The lightweight midsole has a shock absorbing effect. With removable, breathable insole. Size indication is in UK sizes, for EU / US sizes see size chart at the end of the catalogue.



Coral
875211 - 3080
sizes: 3.5 to 8



Yellow - Black
875211 - 4800
sizes: 3.5 to 12

POWERPITCH HOCKEY SHOE OUTDOOR

STYLE NUMBER
875214

PU

VELCRO CLOSURE: 28 - 29 - 30 - 31 - 32 - 33

£ **33,99**

LACES: 34 - 35 - 36 - 37 - 38

£ **33,99**

The studded sole makes this outdoor hockey shoe perfect for kids who need an optimal grip on both water and sand fields. The upper is made of material that repels water. The studded sole has a stability plate, and the lightweight, shock-absorbing midsole provides sufficient cushioning. The hardened heel counter provides extra protection for the heel. In sizes 28-33, this shoe has a Velcro closure and sizes 34, 35, 36, 37 and 38 close with laces.



White - Multi
875214 - 2345



Blue - Neon Orange
875214 - 5033



Diva Pink
875214 - 6630



Coral
875214 - 6620



Black - Neon Yellow
875214 - 8004

POWERPITCH HOCKEY SHOE INDOOR

STYLE NUMBER
875215

PU

VELCRO CLOSURE: 28 - 29 - 30 - 31 - 32 - 33

£ **33,99**

LACES: 34 - 35 - 36 - 37 - 38

£ **33,99**

Reece's junior indoor hockey shoe is characterized by the wear-resistant natural rubber sole, which is equipped with a pivot point for better turnability and a stability plate. The shoe offers excellent cushioning thanks to the lightweight, extra insole. The shoe has a hardened heel cap for additional protection. The sturdy but breathable upper feels soft and offers good support to the children's feet. In sizes 28 to 33, the shoe has a velcro fastener, and from size 34, it has a lace fastener.



Blue - Neon Orange
875215 - 5033



Diva Pink
875215 - 6630



Coral
875215 - 6620



Black - Neon Yellow
875215 - 8004

RANKEN BACKPACK

600D POLYESTER

STYLE NUMBER
885827

SIZE: ONE SIZE

£ 30,99

The Ranken Backpack is a multifunctional backpack with a stick-it-through compartment for your hockey stick. The bag has a spacious main compartment, which is divided into two compartments. In addition, the bag has a smaller pocket on the front and a mesh pocket on the side. The backpack has adjustable backpack straps and reflective prints on all sides. With this sports bag you can be seen! Dimensions: 40 x 25 x 16 cm (H x W x D).



Dark Green
885827 - 1110



Mint - Multi Colour
885827 - 1123



Blue
885827 - 5555



Diva Pink
885827 - 6630



Navy - Red
885827 - 7600



Black - Neon Yellow
885827 - 8004



COFFS BACKPACK

100% POLYESTER RIPSTOP

STYLE NUMBER
885825

SIZE: ONE SIZE

£ 48,99

The Coffs Backpack is a lightweight and multifunctional sports bag. The bag consists of two large compartments, with laptop compartment, a smaller compartment on the front and a mesh side pocket. Including reflective prints and dirt-resistant bottom. A small safety whistle integrated into the buckle can help in an emergency. Dimensions: 50 x 34 x 18 cm (H x W x D).



Army Green
885825 - 1030



Navy
885825 - 7000



Black
885825 - 8000



HEROES JR BACKPACK

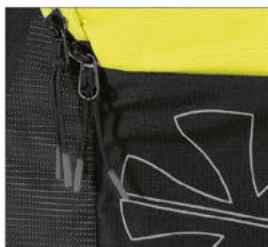
300D POLYESTER, POLYESTER RIBSTOP, PU

STYLE NUMBER
885828

SIZE: ONE SIZE

£ 37,50

Looking for a multifunctional backpack with adjustable shoulder straps? Then the Heroes JR Backpack is just right for you. This backpack has several large and small compartments and also offers a storage option for valuables. The bag has a shoe compartment and a laptop compartment (foamed). Also handy in this bag are the water bottle holder and the stick holders with velcro closure for attaching your hockey stick. The raincover and dirt-resistant bottom will keep your bag dry and clean. The bag is lightweight and has reflective prints. Dimensions: 45 x 27 x 15,5 cm (H x W x D).



Black - Neon Yellow
885828 - 8004



HEROES BACKPACK

300D POLYESTER, POLYESTER RIBSTOP, PU

STYLE NUMBER
885829

SIZE: ONE SIZE

£ 41,99

Looking for a multifunctional backpack with adjustable shoulder straps? Then the Heroes Backpack is just right for you. This backpack has several large and small compartments and also offers a storage option for valuables. The bag has a shoe compartment and a laptop compartment (foamed). Also handy in this bag are the water bottle holder and the stick holders with velcro closure for attaching your hockey stick. The raincover and dirt-resistant bottom will keep your bag dry and clean. The bag is lightweight and has reflective prints. Dimensions: 52 x 30 x 17,5 cm (H x W x D).



Black
885829 - 8000



DERBY II BACKPACK

POLYESTER

STYLE NUMBER
885824

SIZE: ONE SIZE

£ 37,50

The Derby Backpack II is a multifunctional sports bag made of sturdy material. Ideal for sports, gym and school. The bag consists of two large compartments and a mesh side pocket. For hockey players, the bag has an added bonus: a stick cover is hidden in the back of the bag. This way the hockey stick can fit in the bag. If the cover is not used, it can be hidden in the back of the bag, keeping the bag multifunctional. Including reflective prints and dirt-resistant bottom. Dimensions: 44 x 34 x 20 cm (H x W x D).



Black
885824 - 8000



JUNIOR STICK BAG

600D POLYESTER, PVC

STYLE NUMBER
885809

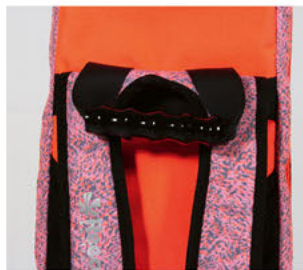
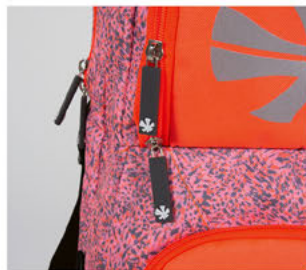
SIZE: ONE SIZE

£ **48,99**

This junior hockey stick bag is suitable for up to four sticks. The bag is made of durable polyester with a PVC inside. The backpack straps, adjustable shoulder strap and silicone handle make it easy to carry the bag. In addition to the main compartment, the bag contains different compartments with zip. Dimensions: 100 x 22 x 12 cm (H x VV x D).



Coral
885809 - 3080



GIANT STICK BAG

600D POLYESTER, PVC

STYLE NUMBER
685802

SIZE: ONE SIZE

£ **45,99**

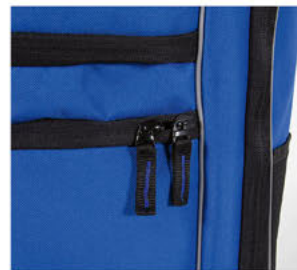
This hockey stick bag is suitable for up to six sticks. The bag is made of durable polyester with a PVC inside. The backpack straps, adjustable shoulder strap and silicone handle make it easy to carry the bag. In addition to the main compartment, the bag contains different compartments with zip. Including name tag. Dimensions: 100 x 25 x 30 cm (H x VV x D).



Blue
685802 - 5000

Red
685802 - 6000

Black
685802 - 8000



DERBY II STICK BAG SMALL

POLYESTER

STYLE NUMBER
885823

SIZE: ONE SIZE

£ **43,50**

This hockey stick bag is suitable for up to four sticks. The bag is made of durable polyester with a PVC inside. The backpack straps, adjustable shoulder strap and silicone handle make it easy to carry the bag. In addition to the main compartment, the bag contains different compartments with zip. Including reflective prints. Dimensions: 98 x 19 x 14 cm (H x VV x D).



Black
885823 - 8000



DERBY II STICK BAG

POLYESTER

STYLE NUMBER
885822

SIZE: ONE SIZE

£ **53,99**

This hockey stick bag is suitable for up to six sticks. The bag is made of polyester with a PVC inside. The backpack straps, adjustable shoulder strap and silicone handle make it easy to carry the bag. In addition to the main compartment, the bag contains different compartments with zip. Including reflective prints. Dimensions: 100 x 24 x 24 cm (H x VV x D).



Black
885822 - 8000



TROLLEY BAG LARGE

600D POLYESTER

STYLE NUMBER
885806

SIZE: ONE SIZE

£ **145,99**

This large trolley bag (capacity: 48 liters) has a spacious head compartment with double zip and a double zip front pocket. On both the outside and inside you'll discover various spacious storage compartments with zip. The bag contains a hidden carrying harness and can be carried as a backpack. Roll the bag easily on the two silicone wheels and use the extendable and sturdy handles. Dimensions: 76 x 37 x 36 cm (H x W x D).



Black
885806 - 8000



NOTEBOOK BAG

600D POLYESTER

STYLE NUMBER
885807

SIZE: ONE SIZE

£ **48,99**

This perfect laptop bag is suitable for laptops up to 15.6 inches. The bag has several extra storage compartments, with zips. With detachable and adjustable shoulder strap and with handle to carry the bag. The bag contains a luggage strap for easy attachment to a trolley case. Includes key holder. Dimensions: 31 x 39 x 15 cm (H x W x D).



Black
885807 - 8000



TAMWORTH BALL BAG

600D POLYESTER, PVC

STYLE NUMBER
885820

SIZE: ONE SIZE

£ 29,99

This handy bag for hockey or tennis balls, offers space for up to 36 balls and contains a hard plastic bottom. This ensures sturdiness and stability when you put the bag down. The bag comes with an adjustable and removable carrying handle. Dimensions: 35 x 23 x 23 cm (H x W x D).



Black
885820 - 8000



GYMSACK

100% POLYESTER

STYLE NUMBER
885819

SIZE: ONE SIZE

£ 7,99

This lightweight backpack is ideal for your gym equipment. The bag is made of water-repellent material and includes a loop. The bag can be closed by pulling the cords. The logo on the bag is reflective. Dimensions: 47 x 37 cm (H x W).



Black
885819 - 8000



INDEE HIP BAG

100% POLYESTER

STYLE NUMBER
885821

SIZE: ONE SIZE

£ 16,50

With the Indee Hip Bag from Reece Australia you always have your essentials close. Clip it around your waist or wear it diagonally over your body. The hip bag is made of 100% polyester and contains an adjustable strap. In the bag there is an extra inner pocket with zipper. Dimensions: 14 x 33 x 8 cm (H x W x D).



Black
885821 - 8000



Grey - Yellow
885821 - 9390

WINSTON SHIN GUARDS

STYLE NUMBER
882109

PU

SIZE: S - M - L

£ 32,99

The Winston shin guards have a hard cover for optimal protection. The ankles are also well protected by the construction. The shinguards are anatomically shaped and have a Velcro closure on the front. The Winston shin guards are washable!



Black
882109 - 8000



LAVERTON SHIN GUARDS

STYLE NUMBER
882108

PU

SIZE: XXXS - XXS - XS - S - M - L

JR £ 24,99 SR £ 24,99

The Laverton shinguards have a hard scale for optimal protection. The ankles are also well protected by the construction. The shinguards are anatomically shaped and equipped with a Velcro closure on the front.



Pink
882108 - 0060

Neon Yellow
882108 - 4190



Black
882108 - 8000



ELMORE SHIN GUARDS

STYLE NUMBER
882107

PU

SIZE: S - M - L

£ 20,99

The Elmore shinguards have a hard scale for optimal protection. The ankles are also well protected by the construction. The shinguards are anatomically shaped and equipped with a Velcro closure.



Grey - Orange
882107 - 9300



ULTRA SAFE MOUTHGUARD

EVA

STYLE NUMBER
889108

SIZE: JR - SR

£ 10,50

The Reece Ultra Safe Mouthguard protects your teeth during competitions and training. The mouthguard is flexible and very shock absorbing. A good fit of a hockey bit is important; thanks to the "boil and bite" method, this mouthpiece always fits you well. The Reece Ultra Safe Mouthguard comes with a practical storage box. Available in different colours, and is provided with the ISET quality mark.



No Colour
889108 - 1111



White - Black
889108 - 2800



Blue
889108 - 5000



Pink
889108 - 6320



Coral - Mint
889108 - 6612



MOUTHGUARD DENTAL IMPACT SHIELD

POLYOLEFINS

STYLE NUMBER
889100

SIZE: JR - SR

£ 4,99

This hockey mouth guard protects the teeth during match and training. The teeth protector is available in three different colours. It is delivered including storage box.



Pink
889100 - 0060



No Colour
889100 - 1111



White - Orange
889100 - 2300



White - Black
889100 - 2800



Royal - Orange
889100 - 5370



Blue - Green
889100 - 5950

INDOOR PROTECTION SHIELD

EVA FOAM

STYLE NUMBER
889039

SIZE: ONE SIZE

£ 16,50

Do you like to play indoor hockey? Then this glove from Reece comes in handy. One size fits all, so they always passengers you. In addition, the glove is adjustable with Velcro, so you can make them as tight as you want. It is also lovely that this hockey indoor glove is lightweight. Have fun during the game, but put safety first with this Reece indoor hockey glove.



Black - White
889039 - 8200

FORCE PROTECTION GLOVE SLIM FIT

STYLE NUMBER
889034

SIZE: XXS - XS - S - M - L - XL

£ 27,99

This slim-fit hockey glove with velcro closure offers optimal flexibility and protection. The glove is padded on the upper hand and protects the entire fingers, including the thumb. The glove contains silicone nubs for good grip, both on the fingers and in the palm of the hand. The glove is suitable for the left hand and is packed per piece.



Black - Neon Yellow
889034 - 8410

COMFORT FULL FINGER GLOVE

STYLE NUMBER
889024

SIZE: XXXS - XXS - XS - S - M - L - XL

£ 24,99

This hockey glove with velcro closure offers optimal flexibility and protection. The glove is padded on the upper hand and protects the entire fingers, including the thumb. The glove contains silicone nubs for good grip, both on the fingers and in the palm of the hand. The glove is suitable for the left hand and is packed per piece.



Pink
889024 - 0060



Mint
889024 - 1160



Black
889024 - 8000



Grey
889024 - 9000

COMFORT HALF FINGER GLOVE

STYLE NUMBER
889025

SIZE: XXS - XS - S - M - L - XL

£ 20,99

This hockey glove with velcro closure offers flexibility and protection. The glove is padded on the upper hand and protects the knuckles, excluding the thumb. The glove contains silicone nubs for good grip, in the palm of the hand. The glove is suitable for the left hand and is packed per piece.



Pink
889025 - 0060



Mint
889025 - 1160



Orange
889025 - 3000



Blue
889025 - 5000



Black
889025 - 8000



Grey
889025 - 9000

CONTROL PROTECTION GLOVE

STYLE NUMBER
889026

LEATHER, EVA

SIZE: XS - S - M - L

£ 26,99

The Control glove has a hard cap on the upper hand for proper protection of the hand. The fingers, including thumb, are also protected by the glove. With open palm and silicone studs on the inside of the fingers for a good grip. The glove has Velcro closure. Packed per piece (left).



Black - Pink
889026 - 8180



Black - Yellow
889026 - 8400

POWER PLAYER GLOVE

STYLE NUMBER
889027

FLEECE, NEOPRENE

SIZE: XXS - XS - S - M - L - XL

£ 19,99

This very comfortable and warm glove has an inside of high quality fleece with extra grip on the fingertips and on the palm. This makes the gloves ideal for sports, and also suitable for casual use. The outside is made of dirt-repellent neoprene with reflective prints. Contains a mobile patch on the index fingers.



Black
889027 - 8000

KNITTED ULTRA GRIP GLOVE

STYLE NUMBER
889035

SIZE: JR - SR

£ 6,99

These knitted sports gloves are ideal for keeping your hands warm when exercising in colder weather conditions. The palm contains studs for good grip, both on the fingers and in the palm. Two fingertips also have a touchscreen. Choose these elastic gloves and keep yourself comfortably warm this winter!



KNITTED PLAYER GLOVE 2 IN 1

95% ACRYL, 5% ELASTANE

STYLE NUMBER
889011

SIZE: SR

£ 16,50

These sports gloves are ideal for sports in colder weather. The glove contains silicone nubs for good grip, both on the fingers and in the palm of the hand. The glove can be worn in two ways: with finger cover or with hand cover.



KNITTED ULTRA GRIP GLOVE 2 IN 1

STYLE NUMBER
889031

SIZE: JR - SR

JR £ 16,50

SR £ 16,50

These sports gloves are ideal for sports in colder weather. The glove contains silicone nubs for good grip, both on the fingers and in the palm of the hand. The glove can be worn in two ways: with finger cover or with hand cover.



ASM REV3RSE HOCKEYSTICK SR

50% FIBERGLAS, 10% KEVLAR, 40% CARBON

STYLE NUMBER
889223

SIZE: 36.5

£ 169,99

With this mirrored stick, that you use left-handed, the convex and flat sides are reversed. Because the training stick is used differently to a normal stick you improve your adaptability and technique, and your right handed ball handling will benefit. Training with the REV3RSE stick is not only fun, the variation it offers really makes you a better player. The stick is lightweight and has an extra long grip and anti-vibration end cap. The high carbon content ensures extra stiffness of the stick. The stick is developed from the vision of the Athletic Skills Model.



Black - White
889223 - 8200

ASM REV3RSE HOCKEYSTICK JR

80% FIBERGLAS, 15% ARAMID, 5% CARBON

STYLE NUMBER
889222

SIZE: 32 - 33 - 34 - 35

£ 107,99

With this mirrored stick, that you use left-handed, the convex and flat sides are reversed. Because the training stick is used differently to a normal stick, you improve your adaptability and technique, and your right handed ball handling will benefit. Training with the REV3RSE stick is not only fun, the variation it offers really makes you a better player. The younger you start with this, the better. The stick is lightweight and has an extra long grip and anti-vibration end cap. The stick is developed from the vision of the Athletic Skills Model.



Black - White
889222 - 8200

ASM HOCKEY ADAPTABALL PLAIN

PU, PVC

STYLE NUMBER
889029

SIZE: 1 - 2

£ 62,99

This training ball contains a subtle imbalance that creates a slight deviation in the predicted behaviour. As a result, the ball rolls slightly differently from what you would expect. By training with the Adaptaball, you improve your motor skills and responsiveness. The ball - developed from the vision of the Athletic Skills Model - is available with two different levels of deviation. The orange ball contains the biggest deviation, the yellow only minimum deviation. The outside is made of PVC, with plain design. The inside of the ball is hollow. The balls are packed per 6 pieces.



Orange - Size 1
889029 - 3000 - 1



Yellow - Size 2
889029 - 4000 - 2

ASM HOCKEY ADAPTABALL DIMPLE

PU, PVC

STYLE NUMBER
889028

SIZE: 1 - 2

£ 62,99

This training ball contains a subtle imbalance that creates a slight deviation in the predicted behaviour. As a result, the ball rolls slightly differently from what you would expect. By training with the Adaptaball, you improve your motor skills and responsiveness. The ball - developed from the vision of the Athletic Skills Model - is available with two different levels of deviation. The orange ball contains the biggest deviation, the yellow only minimum deviation. The outside is made of PVC, with dimple design. The inside of the ball is hollow. The balls are packed per 6 pieces.



Orange - Size 1
889028 - 3000 - 1



Yellow - Size 2
889028 - 4000 - 2

PREMIUM DIMPLE BALLS (6 PCS)

PVC

STYLE NUMBER
889020

SIZE: ONE SIZE

£ 98,99

This ball for fieldhockey is absolute match quality. It's made with the latest rotational molding technology, which gives the balls the perfect balance and the right thickness. The outside is made of PVC, with dimple design. The inside of the ball consists of a cork and rubber composition. The balls are packed per 6 pieces.



White
889020 - 2000

MATCH ULTRA BALLS (12 PCS)

PVC

STYLE NUMBER
889022

SIZE: ONE SIZE

£ 101,99

This ball for fieldhockey is absolute match quality. It's made with the latest rotational molding technology, which gives the balls the perfect balance and the right thickness. The outside is made of PVC, with flat design. The inside of the ball is hollow. The balls are packed per 12 pieces.



White
889022 - 2000

DIMPLE ULTRA BALLS (12 PCS)

PVC

STYLE NUMBER
889021

SIZE: ONE SIZE

£ 101,99

This ball for fieldhockey is absolute match quality. It's made with the latest rotational molding technology, which gives the balls the perfect balance and the right thickness. The outside is made of PVC, with dimple design. The inside of the ball is hollow. The balls are packed per 12 pieces.



White
889021 - 2000



White
889021 - 2000



White
889021 - 2000

EMOTICON HOCKEY BALLS

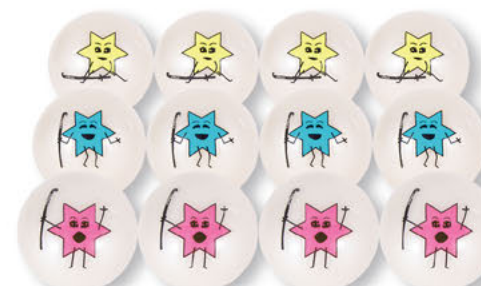
PVC

STYLE NUMBER
889033

SIZE: ONE SIZE

£ 65,99

These hockey balls with emoticon design make playing hockey even more fun! The outside is made of PVC, with a flat design. The inside of the ball is hollow. The balls are packed per 12 pieces.



Multi Colour
889033 - 1234

MATCH BALLS

PVC

STYLE NUMBER
889009

SIZE: ONE SIZE

£ 59,99

This high quality ball for fieldhockey is suitable for both training and match. The outside is made of PVC, with flat design. The inside of the ball is hollow. The balls are packed per 12 pieces.



White
889009 - 2000

GLITTER BALLS

PVC

STYLE NUMBER
889006

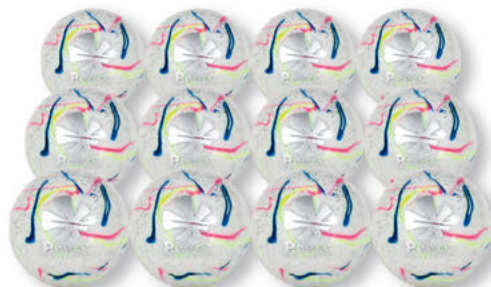
SIZE: ONE SIZE

£ 59,99

These hockey balls with glitter design come in various colours. The outside is made of PVC, with flat design. The inside of the ball is hollow. The balls are packed per 12 pieces.



Gold
889006 - 0101



White
889006 - 2000



Pink
889006 - 6320

STREET BALLS

PVC

STYLE NUMBER
889017

SIZE: ONE SIZE

£ 59,99

These hockey balls, available in various colours / designs, are packed per 12 pieces.



Neon Green
889017 - 1080



Light Blue
889017 - 5030



Pink
889017 - 6320

MATCH FANTASY BALLS

PVC

STYLE NUMBER
889016

SIZE: ONE SIZE

£ 59,99

These hockey balls with colourful design come in various colours. The outside is made of PVC, with flat design. The inside of the ball is hollow. The balls are packed per 12 pieces.



Assorti
889016 - 9760

INDOOR BALLS

PVC

STYLE NUMBER
889010

SIZE: ONE SIZE

£ 59,99

This high quality ball for indoor hockey is suitable for both training and match. The outside is made of PVC, with flat design. The inside of the ball is hollow. The balls are packed per 12 pieces.



Yellow
889010 - 4000

PROFESSIONAL HOCKEY GRIP

PU

STYLE NUMBER
889805

SIZE: 180 CM

£ 9,99

This grip tape for the hockey stick has an anti-slip surface and is water absorbent. It is self-adhesive and easy to apply. The stiff surface gives you control over your stick, even in wet weather conditions. The moisture is then absorbed. In addition, the grip tape gives an extra soft and cushioned feel. For optimal control on the field!



Pink
889805 - 0060



Lime
889805 - 1740



White
889805 - 2000



Orange
889805 - 3000



Blue
889805 - 5000



Black
889805 - 8000

COTTON TAPE

100% COTTON

STYLE NUMBER
889800

SIZE: ONE SIZE

£ 5,50

This grip tape for the hockey stick is self-adhesive and easy to apply. The grip tape gives an extra soft and cushioned feel. For optimal control on the field!



Pink
889800 - 0060



White
889800 - 2000



Bright Royal
889800 - 5160



Black
889800 - 8000

CHAMOIS GRIP

CHAMOIS LEATHER

STYLE NUMBER
889804

SIZE: ONE SIZE

£ 6,50

This chamois leather grip tape for the hockey stick is self-adhesive and easy to apply. The grip tape gives an extra soft and cushioned feel. For optimal control on the field!



No Colour
889804 - 0000

RX MINI STICK 18 INCH

WOOD

STYLE NUMBER
889019

SIZE: 18

£ 15,50

The Mini Stick from Reece is a great gift for the birth of a future hockey player. Also suitable to get the little ones excited about the game.



Pink
889019 - 0060



Blue
889019 - 5000

DALBY DRINKBOTTLE

SILICONE

STYLE NUMBER
889826

SIZE: ONE SIZE

£ 16,50

This drinking bottle made of flexible silicone material is foldable and lightweight. It features a strong anti-leak cap. On the side it shows a measure indication (in milliliters). The material of the bottle is non-toxic and BPA-free.



Pink
889826 - 0060



Green
889826 - 1000

BELLFIELD DRINKBOTTLE

BPA FREE

STYLE NUMBER
889829

SIZE: ONE SIZE

£ 3,99

The Bellfield bottle is made of flexible material, ergonomically shaped for a good grip. Available in two colours. Naturally BPA-free. The bottles are packed individually.



Pink
889829 - 0060



Black
889829 - 8000

RILEY BUCKET HAT

100% COTTON

STYLE NUMBER
889835

SIZE: ONE SIZE

£ 17,99

This cotton fishing hat can be worn on both sides: one side is plain, and the other side has a print. The hat is lightweight and quick-drying. One size fits all.



Creame - Vintage Green
889835 - 2815

RACKET VISOR CAP

POLYESTER

STYLE NUMBER
889836

SIZE: ONE SIZE

£ 17,99

This polyester sun visor is one size fits all due to the adjustable velcro strap. The sun visor is lightweight, and the inside is equipped with mesh for sweat dispersal. Do you see yourself playing with this stylish sun visor, or will you take it with you on holiday? Wherever you take this Reece sun visor, you will protect your eyes (and face) against the sun.



Vintage Green
889836 - 1125

White
889836 - 2000

Navy
889836 - 7000

Black
889836 - 8000

BASEBALL CAP

STYLE NUMBER
889830

SIZE: ONE SIZE

£ 20,99

With this Baseball Cap from Reece Australia you show that you belong to our team! The cap is made of 100% cotton and the logos are embroidered. Ventilating eyelets are located at the top. The cap has a curved flap and an adjustable closure.



Navy
889830 - 7000



Black
889830 - 8000

ROXBY HAIRBANDS

71% POLYESTER, 29% RUBBER

STYLE NUMBER
889809

SIZE: ONE SIZE

£ 9,50

These stretchy and printed headbands keep your hair out of the way while exercising. On the inside the bands are provided with silicone nubs, so the band stays put. The hairbands are packed per three pieces (three different designs).



Mint - Pink - Black
889809 - 1166



Red - White - Navy
889809 - 6270

SNAPBACK CAP

STYLE NUMBER
889831

SIZE: ONE SIZE

£ 20,99

With this Snapback Cap from Reece Australia you show that you belong to our team! The cap is made of 100% cotton and the logos are embroidered. Ventilating eyelets are located at the top. The cap has a flat flap and an adjustable closure.



Black
889831 - 8000



Grey
889831 - 9000

HAIRBAND NON-SLIP

70% RUBBER, 30% POLYESTER

STYLE NUMBER
889801

SIZE: ONE SIZE

£ 6,50

These stretchy and printed headbands keep your hair out of the way while exercising. On the inside the bands are provided with silicone nubs, so the band stays put. With reflective print for better visibility in the dark. The hairbands are packed per three pieces (three different designs).



Knockout Pink
889801 - 3888



Safety Yellow
889801 - 5998



Black
889801 - 8000



Assorti
889801 - 9760

FOCUS HEADBAND

88% POLYESTER, 12% ELASTANE

STYLE NUMBER
889828

SIZE: ONE SIZE

£ 10,50

This headband has a comfortable fit and is suitable to ties as a headband and keeps hair out of your eyes. The headband features a ClimaTec finish that transports sweat optimally and the breathable material dries quickly. The headband is suitable for training and competitions.



Pink
889828 - 0060



Neon Yellow
889828 - 4190



HEADBAND

90% COTTON, 6% ELASTANE, 4% NYLON

STYLE NUMBER
889834

SIZE: ONE SIZE

£ 6,99

This cotton sweatband is perfect for those moments when you want to perform, such as a competition or training. With the sweatband, you prevent sweat drops from dripping over your head at the moments when it gets exciting! In addition, it is nice that it keeps your hair out of your face—a must-have for every player.



White
889834 - 2000



Orange
889834 - 3000



Black
889834 - 8000

WRISTBAND

100% COTTON

STYLE NUMBER
888804

SIZE: ONE SIZE

£ 10,99

These 100% cotton sweatbands keep you sharp during the most intense sports moments. The strap feels comfortable around your wrist and absorbs moisture well.



White
888804 - 2000



Orange
888804 - 3000



Red
888804 - 6000



Black
888804 - 8000

FOX 40 WHISTLE

PLASTIC

STYLE NUMBER
489813

SIZE: ONE SIZE

£ 6,50

The Fox 40 whistles are professional whistles without a ball and with a high pitched tone that carries long distance. Because the whistle contains no ball it will never refuse to whistle when it is wet. The Fox 40 whistle is used by referees in all sports. Equipped with a solid ring for the attachment of a lanyard. Excluding lanyard.



Yellow
489813 - 4000

Red
489813 - 6000

Black
489813 - 8000

REFEREE WHISTLE + LANYARD

PVC

STYLE NUMBER
489801

SIZE: ONE SIZE

£ 2,99

Whistle with ball. Equipped with a solid ring for the attachment of a lanyard. Including lanyard.



No Colour
489801 - 0000

LANYARDS

COTTON

STYLE NUMBER
489809

SIZE: ONE SIZE

£ 5,50

Referee cords, packed per 6 pieces.



No Colour
489809 - 0000

REFEREE CARD SET

PVC

STYLE NUMBER
889803

SIZE: ONE SIZE

£ 5,50

This card set for referees is ideal for all referees in hockey. The set consists of a note pad and a red, yellow and green card. The set is indispensable for referees to lead a match.



Black
889803 - 8000

MONTO MESH BIB

100% POLYESTER

STYLE NUMBER
888000

SIZE: MINI - JR - SR

£ **7,99**

Professional training bib made of 100% polyester. Available in various colours and sizes. A smooth, fine type mesh that ensures optimal comfort while playing/training. Excellent for printing.



Pink
888000 - 0060



Orange
888000 - 3000



Yellow
888000 - 4000



Grey
888000 - 9000

DISC CONES

PVC

STYLE NUMBER
489815

SIZE: ONE SIZE

£ **5,99**

Disc cones are useful for setting out a training field or track. They are easy to stack and packed by 6 pieces.



No Colour
489815 - 0000

DISC CONES HIGH - 20 PCS

PVC

STYLE NUMBER
489844

SIZE: ONE SIZE

£ **60,50**

This set of 20 disc cones - including a holder and a functional storage bag - is ideal for setting out a training court or track. The disc cones feature notches and are multi-useable.



No Colour
489844 - 0000

DISC CONE SET

PVC

STYLE NUMBER
489823

SIZE: ONE SIZE

£ **32,99**

Disc cones are useful for setting out a training field or track. They are easy to stack. This set includes 40 disc cones with holder. They are packaged in a sealable net.



No Colour
489823 - 0000

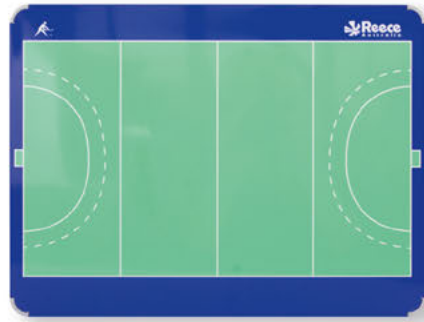
COACHBOARD HOCKEY 30X40CM

STYLE NUMBER
889037

SIZE: ONE SIZE

£ 55,50

For hockey trainers who like to take their training to the next level, this aluminum Reece coachboard measuring no less than 30 x 40 cm is the best choice. The board can be used as a whiteboard, you can easily explain your tactics with the included marker. In addition, it is also possible to use magnets on the board (not included). A nice board that should be used on any hockey field where serious training takes place.



Green
889037 - 1000

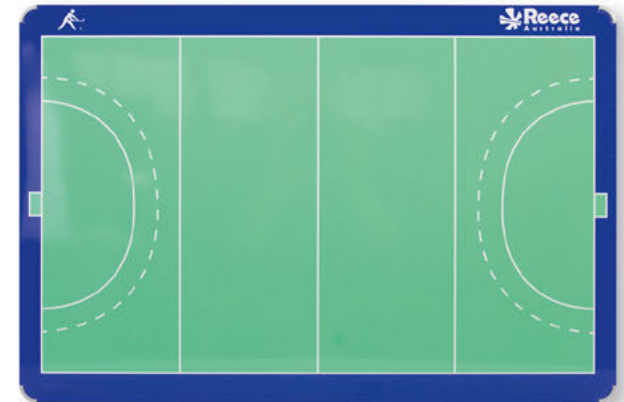
COACHBOARD HOCKEY 40X60CM

STYLE NUMBER
889038

SIZE: ONE SIZE

£ 73,99

For hockey trainers who like to take their training to the next level, this aluminum Reece coachboard measuring no less than 40 x 60 cm is the best choice. The board can be used as a whiteboard, you can easily explain your tactics with the included marker. In addition, it is also possible to use magnets on the board (not included). A nice board that should be used on any hockey field where serious training takes place.



Green
889038 - 1000

STOPWATCH

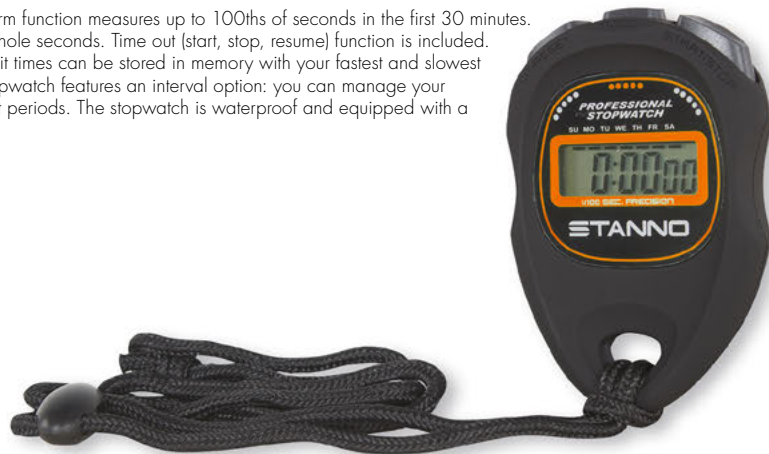
PVC

STYLE NUMBER
489828

SIZE: ONE SIZE

£ 15,50

This stopwatch with alarm function measures up to 100ths of seconds in the first 30 minutes. After that it measures whole seconds. Time out (start, stop, resume) function is included. 100 cumulative and split times can be stored in memory with your fastest and slowest times identified. The stopwatch features an interval option: you can manage your personal sports and rest periods. The stopwatch is waterproof and equipped with a lanyard.



No Colour
489828 - 0000

CANVAS GYM SHOE VELCRO

CANVAS, RUBBER

STYLE NUMBER
472000

SIZE: 24 - 25 - 26 - 27 - 28 - 29 - 30 - 31 - 32 - 33 - 34 - 35 - 36 - 37 - 38 - 39

£ 11,99

Canvas gym shoes for kids. Ideal for indoor sports and (school) gym. With a durable canvas upper and a velcro closure. Along the durable rubber sole is a broad rubber edge.



Rose
472000 - 0330

White
472000 - 2000

Navy
472000 - 7000

Black
472000 - 8000

CAPTAIN'S ARMBAND

POLYESTER, ELASTANE

STYLE NUMBER
489101

STYLE NUMBER
489104

STYLE NUMBER
489110

SIZE: JR - SR

£ 3,50

Elastic captiancy. In two colours, with printing.



Orange
489101 - 3000



Yellow
489101 - 4000



Multi Colour
489104 - 0000



Multi Colour
489110 - 0000

CAPTAIN'S ARMBAND UNI

POLYESTER, ELASTANE

STYLE NUMBER
489103

STYLE NUMBER
489109

SIZE: SR

£ 3,50

Elastic captiancy. Available in various colours.



No Colour
489103 - 0000



White
489109 - 2000



Yellow
489109 - 4000



Red
489109 - 6000

CAPTAIN BAND ADJUSTABLE

POLYESTER, ELASTANE

STYLE NUMBER
489100

SIZE: JR - SR

£ 5,99

Elastic captain's band. Easy to put on and adjustable in size thanks to the Velcro closure. With the letter C of Captain, so that everyone can see who the captain of the team is. Available in various colours and prints.



Multi Colour
489100 - 1234



Orange - Black
489100 - 3800



Yellow - Black
489100 - 4800



Pink - Black
489100 - 6390



Neon Green
489100 - 1080



© WSP / Hans Kramhoeller

GROSFLOTTBEKER THGC
WOMEN, GERMANY



REECEAUSTRALIA.COM

PROUD PARTNER

The traditional Hamburg club GTHGC, which combines the sports of hockey, tennis, and golf, is one of the top addresses when it comes to training young players and integrating them into the top teams. Some of the GTHGC's talents, including Paul Smith (Reece Ambassador), have made it through to Germany's senior squad and make the club and us proud. The club plays in a unique special design jersey, which was created in close cooperation with the players of the top teams and now represents the club and the Reece brand in the best possible way.



SPONSORSHIPS

REECE CATALOGUE 2023



GROSFLOTTBEKER THGC
MEN, GERMANY

PROUD PARTNER

The traditional Hamburg club GTHGC, which combines the sports of hockey, tennis, and golf, is one of the top addresses when it comes to training young players and integrating them into the top teams. Some of the GTHGC's talents, including Paul Smith (Reece Ambassador), have made it through to Germany's senior squad and make the club and us proud. The club plays in a unique special design jersey, which was created in close cooperation with the players of the top teams and now represents the club and the Reece brand in the best possible way.

 **Reece**

REECEAUSTRALIA.COM



SPONSORSHIPS

REECE CATALOGUE 2023



Am



ambassadors



PROUD PARTNER

Meet our ambassadors! With Olympic champion Josine Koning on board and Lars Balk, Glenn Schuurman, Jelle Galema, and Mette Winter, we sponsor the crème da la crème of the Dutch hockey world. In addition to outfits, we also ensure that we supply the perfect hockey sticks in collaboration with these players and these top players have even designed the Amaroo sock collection with us. An interactive collaboration where we help each other to the next level. In Germany we are proud of our partnerships with Tom and Mats Grambusch, Moritz Ludwig, Moritz Trompertz and Timm Herzbruch. Some of these ambassadors have become world champions in 2023. We are happy to continue with these world-class ambassadors for years to come!



Size charts

Are you unsure about the sizes you need? These size charts will hopefully be your guide. The fit of the articles is listed on the product pages. Of course, you can always contact us with remaining questions.

HEIGHT (Size)	1
CHEST	2
WAIST	3
HIPS	4
FOOT LENGTH	5
CALF SIZE	6
Sizes are in centimeters	

TEXTILE

MEN

Shirts / Tops / Jackets / Shorts / Pants			
2 - CHEST	3 - WAIST	4 - HIPS	SIZE
91 - 94	79 - 83	82 - 86	S
95 - 99	84 - 88	87 - 91	M
100 - 105	88 - 92	92 - 96	L
106 - 111	93 - 98	97 - 112	XL
112 - 118	99 - 05	113 - 119	XXL
119 - 126	106 - 113	120 - 127	XXXL

LADIES

Shirts / Tops / Jackets / Skorts / Shorts / Pants			
2 - CHEST	3 - WAIST	4 - HIPS	SIZE
81 - 84	63 - 66	81 - 84	XS
85 - 88	67 - 70	85 - 88	S
89 - 92	71 - 74	89 - 92	M
93 - 97	75 - 78	93 - 96	L
98 - 103	79 - 83	97 - 101	XL
104 - 110	84 - 88	102 - 106	XXL
111 - 118	89 - 94	107 - 112	XXXL

KIDS

Shirts / Tops / Jackets/ Shorts / Pants			
2 - CHEST	3 - WAIST	4 - HIPS	SIZE (1 - Height)
52 - 56	50 - 53	55 - 58	104
57 - 61	54 - 57	59 - 62	116
62 - 68	58 - 61	63 - 66	128
69 - 75	62 - 66	67 - 71	140
76 - 83	67 - 71	72 - 76	152
84 - 92	72 - 76	77 - 81	164

On photographic reproduction and print some colour changes may occur between pictures and original products. We reserve the right to make product/technical changes (in design, colour, function and material), which we feel, will make for improvement of the product. We will not accept any responsibility for printing errors in the catalogue!

Garment care: Reece products are made to the highest standards and are subject to strict quality control procedures. Garments however, can discolour due to substances such as liniment or oil, and of course perspiration, all of which may not be fully removable by washing. The extent of discolouration can be greatly reduced by following a few simple procedures. Soaking and/or washing of the garment in water and detergent as soon as possible after use can reduce discolouration, using at least the same volume of water as the garment being treated. Always follow detergent manufacturers instructions, especially those intended to tackle heavy stains and avoid products containing bleach. Reece cannot accept any liability for discolouration or damage to garments resulting from staining caused by elements foreign to the materials used in manufacture.

Reece reserves the right to modify product specifications and prices at any given time.

SHOES

JUNIOR

5 - FOOT LENGTH	UK	EU	US
17.1	10	28	11
18.1	11	29	12
18.4	11,5	30	12,5
19.1	12	31	13
19.7	13	32	1
20.6	1	33	2
21	2	34	2,5
21.9	2,5	35	3,5
22.9	3,5	36	4,5
23.2	4	37	5
24.1	5	38	6

SENIOR

5 - FOOT LENGTH	UK	EU	US
24.8	6	39	7
25.4	6,5	40	7,5
25.7	7	40,5	8
26	7,5	41	8,5
26.7	8	42	9
27	8,5	42,5	9,5
27.3	9	43	10
27.9	9,5	43,5	10,5
28.3	10	44	11
28.6	10,5	44,5	11,5
29	11	45	12

These sizes are only to be used as a guide. Careful attention should be paid to garment with a "Slim Fit" icon which are obviously a smaller, slimmer fitting. Sampling is strongly advised if you are unsure about sizes. We cannot accept any liability or return of goods, if garments are decorated and then found to be unsuitable.

HOCKEYSTICKS

1 - HEIGHT	HOCKEYSTICK SIZE (INCH)
105	24
110	26
112,5	27
115	28
117,5	29
120	30
122,5	31
125	32
132,5	33
140	34
150	35
160	36,5

GLOVES

6 - HAND CIRCUMFERENCE	GLOVE SIZE
< 14	XXS
14 - 16	XS
16,5 - 18	S
19 - 22	M
23 - 26	L
27 - 28,5	XL

SHIN GUARDS

WITH ANKLE SOCK

1 - HEIGHT	SHIN GUARDS SIZE	
110-130	XS	MINI
130-150	S	PUPIL
150-170	M	JUNIOR
170-190	L	SENIOR

WITHOUT ANKLE SOCK

1 - HEIGHT	SHIN GUARDS SIZE
< 100	XXXS
100-120	XXS
120-140	XS
140-160	S
160-180	M
> 180	L

This size chart is only an indication.
Shinpads must be fitted to confirm the best fit.

On photographic reproduction and print some colour changes may occur between pictures and original products. We reserve the right to make product/technical changes (in design, colour, function and material), which we feel, will make for improvement of the product. We will not accept any responsibility for printing errors in the catalogue!

Garment care: Reece products are made to the highest standards and are subject to strict quality control procedures. Garments however, can discolour due to substances such as liniment or oil, and of course perspiration, all of which may not be fully removable by washing. The extent of discolouration can be greatly reduced by following a few simple procedures. Soaking and/or washing of the garment in water and detergent as soon as possible after use can reduce discolouration, using at least the same volume of water as the garment being treated. Always follow detergent manufacturers instructions, especially those intended to tackle heavy stains and avoid products containing bleach. Reece cannot accept any liability for discolouration or damage to garments resulting from staining caused by elements foreign to the materials used in manufacture.

Reece reserves the right to modify product specifications and prices at any given time.

Size charts

Are you unsure about the sizes you need? These size charts will hopefully be your guide. The fit of the articles is listed on the product pages. Of course, you can always contact us with remaining questions.

HEIGHT (Size)	1
CHEST	2
WAIST	3
HIPS	4
FOOT LENGTH	5
CALF SIZE	6
Sizes are in centimeters	

SOCKS

5 - FOOT LENGTH		UK	EU	US
≥ 15,9		8 - 11	25 - 29	9 - 12
≥ 18,4		11,5 - 3	30 - 35	12,5 - 4
≥ 22,9		3,5 - 6,5	36 - 40	4 - 7,5
≥ 26		7 - 9,5	41 - 44	8 - 10,5
≥ 29		10 - 12,5	45 - 48	11 - 13,5

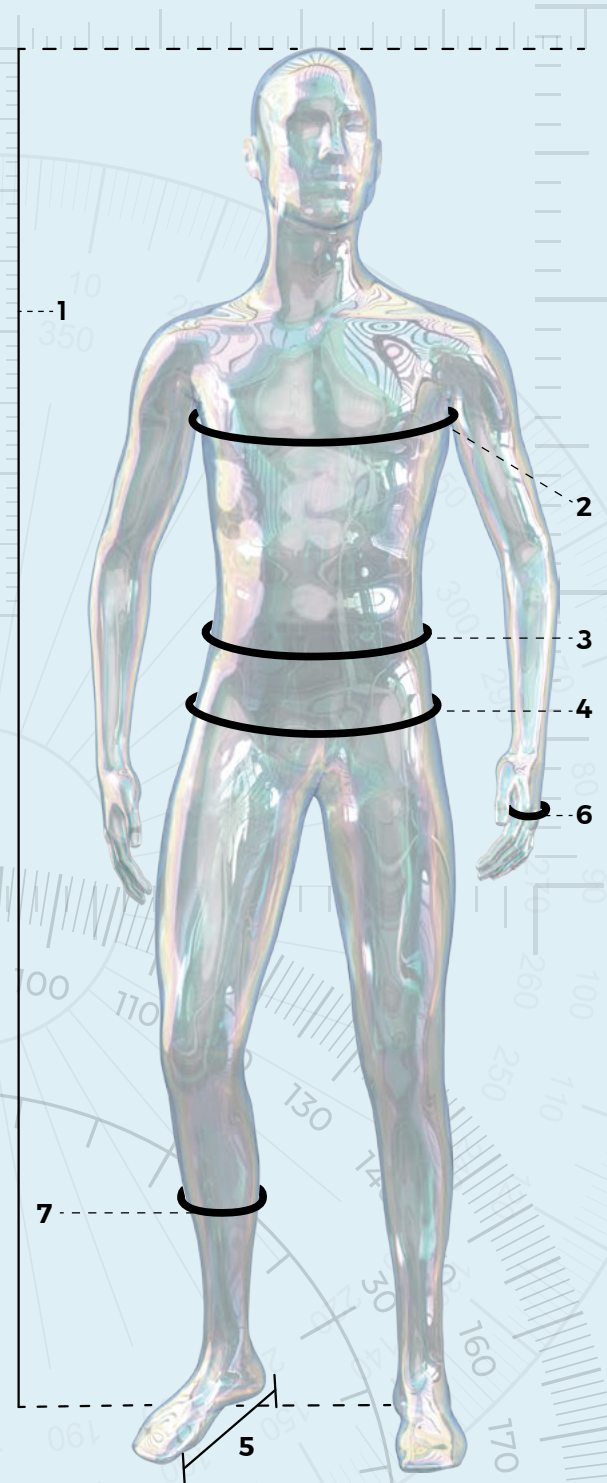
COMPRESSION SOCKS

5 - FOOT LENGTH	7 - CALF SIZE [COMPRESSION]	UK	EU	US
≥ 22 - 24,5	32 - 37	3 - 5	35 - 38	3 - 6
≥ 25 - 27,5	38 - 42	6 - 8	39 - 42	7 - 9
≥ 28 - 30,5	43 - 47	9 - 12	43 - 46	10 - 13

FOOTLESS SOCKS

1 - HEIGHT	SIZE
≤ 135	MINI
≤ 160	JUNIOR
≥ 160	SENIOR

These sizes are only to be used as a guide. Careful attention should be paid to garment with a "Slim Fit" icon which are obviously a smaller, slimmer fitting. Sampling is strongly advised if you are unsure about sizes. We cannot accept any liability or return of goods, if garments are decorated and then found to be unsuitable.



Style Number	Product name	Life Cycle
Shirts, shorts/skorts and socks		
810606	Rise Shirt Ladies	NOOS
810003	Rise Shirt	NOOS
863601	Sheila Polo Ladies	NOOS
863000	Elliot Polo	NOOS
810601	Core Shirt Ladies	2023
810201	Core Shirt	2023
863107	Isa Climatec Polo Ladies	X
863106	Darwin Climatec Polo	X
810607	Reaction Limited Shirt Ladies	X
810002	Smithfield Shirt Limited	X
810004	Reaction Limited Shirt	X
839101	Fundamental Skort Ladies	2024
837101	Legacy Shorts	2024
815304	Sydney Keeper Shirt Long Sleeve	2024
815303	Mission Goalkeeper Shirt	X
846000	Essence Baselayer Long Sleeve Shirt	2025
838003	Essence Baselayer Shorts	2025
840008	Jax Socks	2023
840007	Oxley Socks	X
840002	Glenden Special Socks	X
840005	Hervey Socks	X
840004	Surrey Socks	X
840006	Amaroo Socks	X
440125	Uni Pro Socks	NOOS
440001	Uni II Socks	NOOS
440106	Combi Socks	NOOS
440105	Ring Socks	NOOS
440108	Original Socks	NOOS
440112	Uni Footless Socks	NOOS
444000	Prime Compression Socks	NOOS
444001	Prime Crew Socks	NOOS
444002	Prime Quarter Socks	NOOS
442103	Elite Socks	NOOS
842000	Nelson 2-Pack Crew Socks	NOOS
Tops, Jackets, Shorts and Pants		
808111	Valla Quarter Zip Top	2025
832001	Miles Pants	2025
808658	Premium Full Zip Top Ladies	2024

Style Number	Product name	Life Cycle
832611	Icon TTS Pants Ladies	2024
808110	Premium Full Zip Top	2024
832000	Icon TTS Pants	2024
808107	Cleve TTS Top Round Neck	2023
832000	Icon TTS Pants	2024
808654	Cleve TTS Hooded Top Full Zip Ladies	2023
808010	Cleve TTS Hooded Top Full Zip	2023
808647	Varsity TTS Top Full Zip Ladies	X
808002	Varsity TTS Top Full Zip	X
808650	Varsity Woven Jacket Ladies	X
808005	Varsity Woven Jacket	X
831000	Varsity Woven Pants	X
853609	Cleve Breathable Jacket Ladies	2023
853610	Cleve Breathable Pants Ladies	2023
853003	Cleve Breathable Jacket	2023
853004	Cleve Breathable Pants	2023
853607	Varsity Breathable Jacket Ladies	X
853608	Varsity Breathable Pants Ladies	X
853000	Varsity Breathable Jacket	X
856006	Perth Jacket	2025
857000	Tumby Long Coach Jacket	2023
856004	Mackay Puffer Anorak Jacket	X
Sweat Collection		
860618	Studio T-shirt Ladies	2024
838610	Studio Sweat Shorts Ladies	2024
865615	Studio Round Neck Sweat Top Ladies	2024
834642	Studio Cuffed Sweat Pants Ladies	2024
865614	Studio Hooded Sweat Top Ladies	2024
834641	Studio Loose Fit Sweat Pants Ladies	2024
865612	Studio Hooded Zip Sweat Ladies	X
808655	Clermont Oversized Hoodie Ladies	X
838608	Studio Sweat Shorts Ladies	X
838603	Classic Sweat Shorts Ladies	X
860004	Thora Loose Fit Tee Ladies	X
834636	Studio Sweat Pants Ladies	X
860008	Studio T-shirt	2024
863002	Studio Polo	NOOS
865117	Studio Round Neck Sweat Top	2024
838002	Studio Sweat Shorts	2024

Style Number	Product name	Life Cycle
865115	Studio Hooded Sweat Top	NOOS
834007	Studio Sweat Pants	NOOS
834205	Gregory Jogging Pants	X
Racket Club Collection		
869623	Racket Tank Top Ladies	2024
869621	Ivy Singlet Ladies	X
860616	Racket Shirt Ladies	2024
863602	Racket Polo Ladies	2024
869622	Racket Polo Tank Top Ladies	X
839603	Racket Pleated Skort Ladies	2024
839602	Racket Skort Ladies	2024
868602	Racket Dress Ladies	2024
838609	Racket Hotpants Ladies	X
837600	Grafton Shorts Ladies	2023
867600	Racket Bodywarmer Ladies	2024
808657	Racket Stretched Fit Quarter Zip Top Ladies	2024
832612	Racket Tights Ladies	2024
865610	Varsity Stretched Fit Jacket Full Zip Ladies	X
808656	Cleve Stretched Fit Jacket FZ Ladies	2024
834637	Cleve Stretched Fit Pants Ladies	2024
860006	Racket Shirt	2024
863001	Racket Polo	2024
837104	Racket Shorts	NOOS
808109	Racket Stretched Fit Quarter Zip Top	2024
808108	Cleve Stretched Fit Jacket FZ	2024
834005	Cleve Stretched Fit Pants	2024
808008	Varsity Stretched Fit Jacket Full Zip	X
860005	Grammar Shirt	X
Sports Equipment		
Hockey Stick Collection		
889278	Pro Supreme 1000 Grambusch Ltd Hockey Stick	2023
889279	Pro Supreme 1000 Herzbruch Ltd Hockey Stick	2023
889280	Pro Power 900 Hockey Stick	2023
889281	Pro Power 800 Hockey Stick	2023
889282	Pro Power 750 Hockey Stick	2023
889262	Blizzard 600 Hockey Stick	2023
889263	Blizzard 500 Hockey Stick	2023
889264	Blizzard 400 Hockey Stick	2023
889265	Blizzard 300 Hockey Stick	2023

Life Cycle Legend:

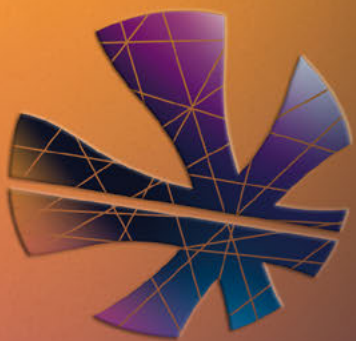
Year = Available to end of stock
X = As long as stocks last
NOOS = Never out of stock

Life Cycle Plan

Style Number	Product name	Life Cycle
889266	Blizzard 200 Hockey Stick	2023
889267	Blizzard 150 Hockey Stick	2023
889268	Blizzard 200 JR Hockey Stick	2023
889269	Nimbus JR Hockey Stick	2023
889270	Alpha JR Hockey Stick	2023
Padel Racket Collection		
889605	Xpert Attack Padel Racket	2023
889604	Xperienced Attack Padel Racket	2023
889603	Xperienced Attack Light Padel Racket	2023
889602	Xperienced Control Padel Racket	2023
889601	Xplorer Attack Padel Racket	2023
889600	Xplorer Control Padel Racket	2023
889040	3-Pack Smash Padel Balls	NOOS
889810	3-Pack Ultra Racket Overgrips	NOOS
Shoes		
875211	Revolution XBlade Hockey Shoe	X
875214	Powerpitch Hockey Shoe Outdoor	X
875215	Powerpitch Hockey Shoe Indoor	X
Bags		
885827	Ranken Backpack	2023
885825	Coffs Backpack	2023
885828	Heroes JR Backpack	2023
885829	Heroes Backpack	2023
885824	Derby II Backpack	X
885809	Junior Stick Bag	X
685802	Giant Stick Bag	NOOS
885823	Derby II Stick Bag Small	X
885822	Derby II Stick Bag	X
885806	Trolley Bag Large	X
885807	Notebook Bag	X
885820	Tamworth Ball Bag	X
885819	Gymsack	NOOS
885821	Indee Hip Bag	X
Protection		
882109	Winston Shin Guards	X

Style Number	Product name	Life Cycle
882108	Laverton Shin Guards	NOOS
882107	Elmore Shin Guards	NOOS
889108	Ultra Safe Mouthguard	NOOS
889100	Mouthguard Dental Impact Shield	NOOS
889039	Indoor Protection Shield	NOOS
889034	Force Protection Glove Slim Fit	NOOS
889024	Comfort Full Finger Glove	X
889025	Comfort Half Finger Glove	X
889026	Control Protection Glove	X
889027	Power Player Glove	NOOS
889035	Knitted Ultra Grip Glove	NOOS
889011	Knitted Player Glove 2 In 1	X
889031	Knitted Ultra Grip Glove 2 In 1	NOOS
ASM Adaptaball & Reverse Sticks		
889223	ASM Rev3rse Hockeystick Senior	2025
889222	ASM Rev3rse Hockeystick Junior	2025
889029	ASM Adaptaball Plain	2024
889028	ASM Adaptaball Dimple	2024
Hockey Balls		
889020	Premium Dimple Balls (6 pcs)	NOOS
889022	Match Ultra Balls (12 pcs)	NOOS
889021	Dimple Ultra Balls (12 pcs)	NOOS
889033	Emoticon Hockey Balls	X
889009	Match Balls	NOOS
889006	Glitter Balls	X
889017	Street Balls	X
889016	Match Fantasy Balls	X
889010	Indoor Balls	NOOS
Hockey Grip & Tape		
889805	Professional Hockey Grip	NOOS
889800	Cotton Tape	NOOS
889804	Chamois Grip	NOOS
Accessories		
889019	RX Mini Stick 18 Inch	X
889826	Dalby Drinkbottle	X

Style Number	Product name	Life Cycle
889829	Bellfield Bidon	NOOS
889835	Riley Bucket Hat	2024
889836	Racket Visor Cap	NOOS
889830	Baseball Cap	NOOS
889831	Snapback Cap	NOOS
889809	Roxby Hairbands	2023
889801	Hairband Non-Slip	NOOS
889828	Focus Headband	X
889834	Headband	NOOS
888804	Wristband	NOOS
489813	Fox 40 Whistle	NOOS
489801	Referee Whistle + Lanyard	NOOS
489809	Lanyards	NOOS
889803	Referee Card Set	NOOS
888000	Monto Mesh Bibs	NOOS
489844	Disc Cones High - 20 pcs	NOOS
489815	Disc Cones	NOOS
489823	Disc Cone Set	NOOS
889037	Coachboard Hockey 30x40cm	X
889038	Coachboard Hockey 40x60cm	X
489828	Stopwatch	NOOS
472000	Canvas Gym Shoe Velcro	NOOS
489101	Captain's Armband	NOOS
489104	Captain's Armband	NOOS
489110	Captain's Armband	NOOS
489103	Captain's Armband	NOOS
489109	Captain's Armband	NOOS
489100	Captain's Armband	NOOS



Deventrade UK Ltd
202 Weston House,
Allen House Business Centre,
The Maltings,
Station Road, Sawbridgeworth,
Herts, CM21 9FP
United Kingdom
+44 (0)1332 378 966

support.uk@deventrade.com
reeceaustralia.com

art.no. 699835

